

# **\$214,500 - 39 53213 Highway 31, Rural Parkland County**

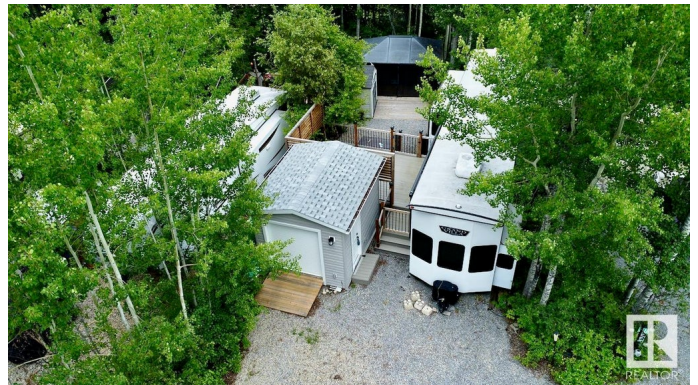
MLS® #E4444662

**\$214,500**

0 Bedroom, 0.00 Bathroom,  
Rural on 0.07 Acres

The Summit (Parkland), Rural Parkland County, AB

Luxury Meets Leisure at The Summit.... Your Elevated Escape Awaits! This titled lot features a nearly new Salem Grand Villa with a spacious primary bedroom, two cozy lofts for extra sleeping, a full-size bathroom, and an elegant open-concept kitchen, dining, and living space. Step outside to your enclosed deck, or unwind in the screened gazebo nestled in privacy and nature. Pineridge offers a 12-hole golf course and a wide range of amenities: pickleball, playgrounds, outdoor kitchens, fitness and rec centres, laundry facilities, and more. Together, these amenities make Pineridge more than just a place to stay—it's a fully featured retreat designed for relaxation, activity, and connection. Escape the city with ease—this turnkey retreat is ready to enjoy for years to come!



## **Essential Information**

MLS® #	E4444662
Price	\$214,500
Bathrooms	0.00
Acres	0.07
Type	Rural
Sub-Type	Vacant Lot/Land
Status	Active

**Community Information**

Address	39 53213 Hghway 31
Area	Rural Parkland County
Subdivision	The Summit (Parkland)
City	Rural Parkland County
County	ALBERTA
Province	AB
Postal Code	T0E 2B0

**Exterior**

Exterior Features	Gated Community, Golf Nearby, Landscaped, Low Maintenance Landscape, No Through Road, Recreation Use
-------------------	--

**Additional Information**

Date Listed	June 27th, 2025
Days on Market	57
Zoning	Zone 93
Condo Fee	\$135

DATA IS DEEMED RELIABLE BUT IS NOT GUARANTEED ACCURATE BY THE REALTORS® ASSOCIATION OF EDMONTON. COPYRIGHT 2025 BY THE REALTORS® ASSOCIATION OF EDMONTON. ALL RIGHTS RESERVED.Trademarks are owned or controlled by the Canadian Real Estate Association (CREA) and identify real estate professionals who are members of CREA (REALTOR®, REALTORS®) and/or the quality of services they provide (MLS®, Multiple Listing Service®)

Listing information last updated on August 23rd, 2025 at 8:17am MDT