

Courtesy Of Cassie Weber Of Century 21 Masters

\$242,000 - 409 5404 7 Avenue, Edmonton

MLS® #E4445138

\$242,000

2 Bedroom, 2.00 Bathroom, 821 sqft

Condo / Townhouse on 0.00 Acres

Charlesworth, Edmonton, AB

Welcome to this bright and beautifully maintained top floor unit in the desirable Elements at Willowhaven. Proudly owned by the original owner, this spacious 2 bdrm, 2 bath condo offers 821 sq ft of open concept living. The modern kitchen is the heart of the home, featuring sleek quartz countertops, SS appliances, and ample cabinetry—perfect for both everyday cooking and entertaining. The living and dining areas are flooded with natural light thanks to the south-facing exposure, with direct access to your private balcony. The primary suite is your personal retreat, complete w/ a spa-inspired ensuite and generous closet space. A second bdrm and full bath are thoughtfully located on the opposite side of the unit, ideal for privacy or guests. Additional features include in-suite laundry, titled underground parking, and a well-managed complex. Located in the heart of Charlesworth, you're just moments from major shopping centers, restaurants, walking trails, and public transportation

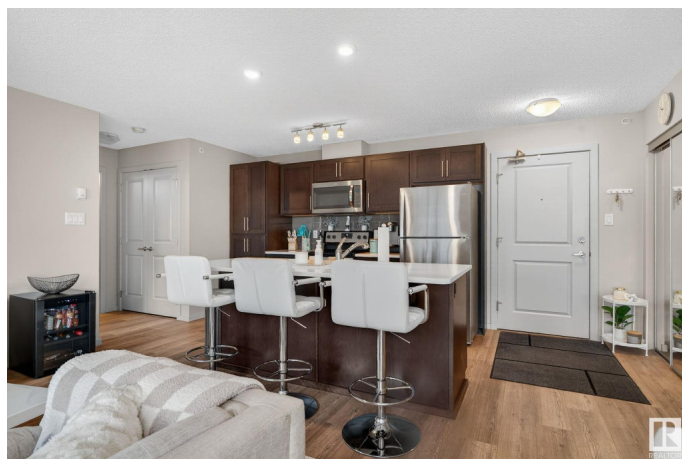
Built in 2018

Essential Information

MLS® # E4445138

Price \$242,000

Bedrooms 2



Bathrooms	2.00
Full Baths	2
Square Footage	821
Acres	0.00
Year Built	2018
Type	Condo / Townhouse
Sub-Type	Lowrise Apartment
Style	Single Level Apartment
Status	Active

Community Information

Address	409 5404 7 Avenue
Area	Edmonton
Subdivision	Charlesworth
City	Edmonton
County	ALBERTA
Province	AB
Postal Code	T6X 2K4

Amenities

Amenities	On Street Parking, No Animal Home, No Smoking Home, Parking-Visitor, Patio, See Remarks
Parking	Heated, Parkade, Underground

Interior

Interior Features	ensuite bathroom
Appliances	Dishwasher-Built-In, Dryer, Oven-Microwave, Refrigerator, Stove-Electric, Washer, Window Coverings
Heating	Baseboard, Natural Gas
# of Stories	4
Stories	1
Has Basement	Yes
Basement	None, No Basement

Exterior

Exterior	Wood, Stone, Vinyl
Exterior Features	Airport Nearby, Flat Site, Golf Nearby, Landscaped, Playground Nearby, Schools, Shopping Nearby, See Remarks
Roof	Asphalt Shingles

Construction	Wood, Stone, Vinyl
Foundation	Concrete Perimeter

Additional Information

Date Listed	June 30th, 2025
Days on Market	4
Zoning	Zone 53
Condo Fee	\$430

DATA IS DEEMED RELIABLE BUT IS NOT GUARANTEED ACCURATE BY THE REALTORS® ASSOCIATION OF EDMONTON. COPYRIGHT 2025 BY THE REALTORS® ASSOCIATION OF EDMONTON. ALL RIGHTS RESERVED.Trademarks are owned or controlled by the Canadian Real Estate Association (CREA) and identify real estate professionals who are members of CREA (REALTOR®, REALTORS®) and/or the quality of services they provide (MLS®, Multiple Listing Service®)

Listing information last updated on July 4th, 2025 at 7:17am MDT