

# \$399,900 - 128 Canary Drive, Rural Athabasca County

MLS® #E4445180

**\$399,900**

2 Bedroom, 0.50 Bathroom, 821 sqft

Rural on 0.23 Acres

Skeleton Lake, Rural Athabasca County, AB

SKELETON LAKE lakefront Lot in the Summer Village of Mewatha Beach . Do not miss out on this amazing lot to build your dream cabin. This property has an original Cabin with 2 bedrooms, large deck overlooking water, Natural Gas and Power, no water or sewer . Boat House in rough condition and parts of a dock and boat lift. Rare find lakerfront Property

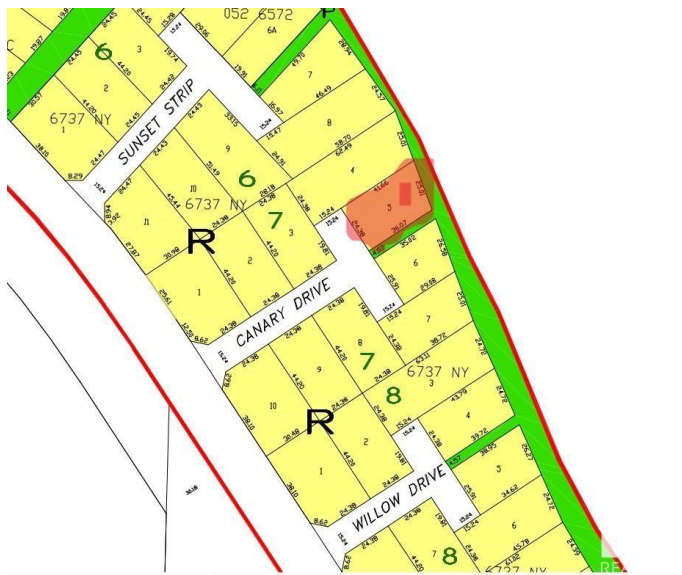
Built in 1968

## Essential Information

MLS® #	E4445180
Price	\$399,900
Bedrooms	2
Bathrooms	0.50
Half Baths	1
Square Footage	821
Acres	0.23
Year Built	1968
Type	Rural
Sub-Type	Detached Single Family
Style	Bungalow
Status	Active

## Community Information

Address	128 Canary Drive
Area	Rural Athabasca County



Subdivision	Skeleton Lake
City	Rural Athabasca County
County	ALBERTA
Province	AB
Postal Code	T0A 0M0

### **Amenities**

Features	See Remarks
----------	-------------

### **Interior**

Heating	Space Heater, Natural Gas
Stories	1
Has Basement	Yes
Basement	None, No Basement

### **Exterior**

Exterior	Wood
Exterior Features	Private Setting, Treed Lot, Waterfront Property
Construction	Wood
Foundation	Block

### **Additional Information**

Date Listed	June 29th, 2025
Days on Market	55
Zoning	Zone 60

DATA IS DEEMED RELIABLE BUT IS NOT GUARANTEED ACCURATE BY THE REALTORS® ASSOCIATION OF EDMONTON. COPYRIGHT 2025 BY THE REALTORS® ASSOCIATION OF EDMONTON. ALL RIGHTS RESERVED. Trademarks are owned or controlled by the Canadian Real Estate Association (CREA) and identify real estate professionals who are members of CREA (REALTOR®, REALTORS®) and/or the quality of services they provide (MLS®, Multiple Listing Service®)

Listing information last updated on August 23rd, 2025 at 4:17am MDT