

\$799,900 - 815 Chahley Way, Edmonton

MLS® #E4445440

\$799,900

4 Bedroom, 2.50 Bathroom, 3,197 sqft

Single Family on 0.00 Acres

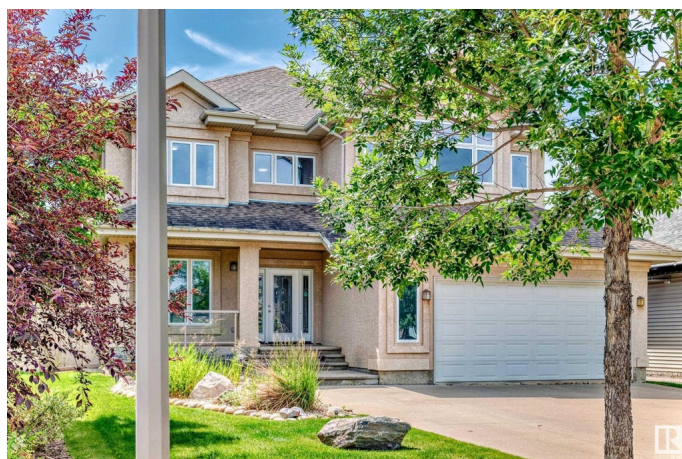
Cameron Heights (Edmonton), Edmonton, AB

Executive Home in Prestigious CAMERON HEIGHTS. Stunning 3,200+ sq ft custom Darren's Home located in Edmonton's sought-after ravine community. This 4 bed, 2.5 bath 2-storey features exceptional curb appeal with a stucco exterior, upgraded hardwood, tile, and carpet throughout. Highlights include a CHEF'S KITCHEN with a 9-ft granite island, custom cabinetry, 6-burner gas cooktop, double ovens, walk-through pantry, and fridge/freezer. The MAIN floor also offers a bright den, formal dining room, spacious living area, and large mudroom. Upstairs features a cozy bonus room, upper laundry, 3 large bedrooms, and a luxurious primary suite with private balcony, 5-pc ensuite with whirlpool tub, and custom tiled shower. Additional features: A/C, alarm system, no-maintenance deck, and heated garage. Located minutes from river valley trails—This is the perfect blend of LUXURY and LOCATION!

Built in 2007

Essential Information

MLS® #	E4445440
Price	\$799,900
Bedrooms	4
Bathrooms	2.50
Full Baths	2



Half Baths	1
Square Footage	3,197
Acres	0.00
Year Built	2007
Type	Single Family
Sub-Type	Detached Single Family
Style	2 Storey
Status	Active

Community Information

Address	815 Chahley Way
Area	Edmonton
Subdivision	Cameron Heights (Edmonton)
City	Edmonton
County	ALBERTA
Province	AB
Postal Code	T6M 0J3

Amenities

Amenities	Air Conditioner, Carbon Monoxide Detectors, Ceiling 9 ft., Deck, Detectors Smoke, Front Porch, No Animal Home, No Smoking Home, Vinyl Windows
Parking	Double Garage Attached

Interior

Interior Features	ensuite bathroom
Appliances	Air Conditioning-Central, Dishwasher-Built-In, Dryer, Freezer, Garage Control, Garage Opener, Hood Fan, Refrigerator, Storage Shed, Stove-Gas, Washer, Window Coverings, Oven Built-In-Two, TV Wall Mount, Curtains and Blinds
Heating	Forced Air-1, Natural Gas
Stories	2
Has Basement	Yes
Basement	Full, Unfinished

Exterior

Exterior	Wood, Stucco
Exterior Features	Cul-De-Sac, Fenced, Golf Nearby, Landscaped, Playground Nearby, Shopping Nearby
Roof	Asphalt Shingles

Construction	Wood, Stucco
Foundation	Concrete Perimeter

Additional Information

Date Listed	July 2nd, 2025
Days on Market	1
Zoning	Zone 20
HOA Fees	240
HOA Fees Freq.	Annually

DATA IS DEEMED RELIABLE BUT IS NOT GUARANTEED ACCURATE BY THE REALTORS® ASSOCIATION OF EDMONTON. COPYRIGHT 2025 BY THE REALTORS® ASSOCIATION OF EDMONTON. ALL RIGHTS RESERVED.Trademarks are owned or controlled by the Canadian Real Estate Association (CREA) and identify real estate professionals who are members of CREA (REALTOR®, REALTORS®) and/or the quality of services they provide (MLS®, Multiple Listing Service®)

Listing information last updated on July 3rd, 2025 at 11:03am MDT