

\$569,999 - 11728 28 Avenue, Edmonton

MLS® #E4445518

\$569,999

3 Bedroom, 3.00 Bathroom, 2,053 sqft

Single Family on 0.00 Acres

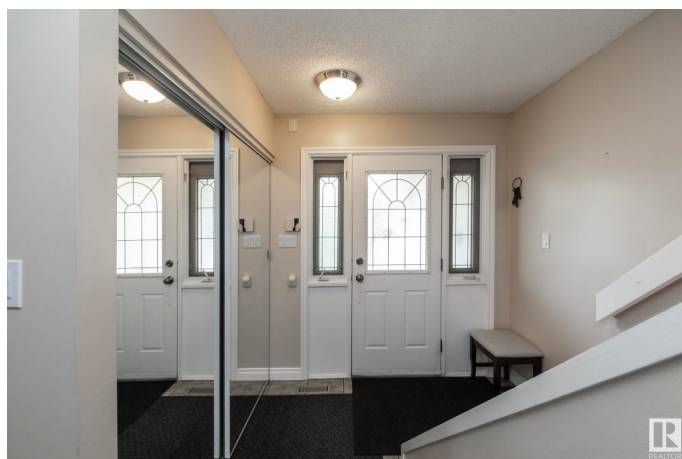
Blue Quill, Edmonton, AB

Welcome to this beautifully updated 2-storey home in the sought-after neighbourhood of Blue Quill! Situated on an expansive corner lot, this southern facing 2,052 sqft home offers 3 bedrooms, 4 bathrooms, and incredible family-friendly living close to schools, daycares, and easy access to Edmonton's multi-use pathways and river valley network. Enjoy the warmth of two gas fireplaces—one in the bright formal living room, the other in the cozy family room. The main and upper levels feature hardwood floors, updated tile and trim work. The kitchen opens to a spacious dining area, perfect for entertaining. Upstairs you'll find 3 generous bedrooms, including a primary with 3pc ensuite, plus an office. The finished basement includes a large rec room, den, 2pc bath, and storage. Additional upgrades include majority of windows replaced, new hot water tank, and new fencing. The fully fenced yard boasts a large deck with gas BBQ hookup—ideal for outdoor living!

Built in 1976

Essential Information

MLS® #	E4445518
Price	\$569,999
Bedrooms	3
Bathrooms	3.00



Full Baths	2
Half Baths	2
Square Footage	2,053
Acres	0.00
Year Built	1976
Type	Single Family
Sub-Type	Detached Single Family
Style	2 Storey
Status	Active

Community Information

Address	11728 28 Avenue
Area	Edmonton
Subdivision	Blue Quill
City	Edmonton
County	ALBERTA
Province	AB
Postal Code	T6J 3P2

Amenities

Amenities	See Remarks
Parking	Double Garage Attached

Interior

Interior Features	ensuite bathroom
Appliances	Dishwasher-Built-In, Dryer, Microwave Hood Fan, Refrigerator, Storage Shed, Stove-Electric, Washer, Window Coverings
Heating	Forced Air-2, Natural Gas
Fireplace	Yes
Fireplaces	Stone Facing, Tile Surround
Stories	3
Has Basement	Yes
Basement	Full, Finished

Exterior

Exterior	Wood, Vinyl
Exterior Features	Corner Lot, Cul-De-Sac, Fenced, Landscaped, Playground Nearby, Public Transportation, Schools, Shopping Nearby
Roof	Asphalt Shingles

Construction	Wood, Vinyl
Foundation	Concrete Perimeter

School Information

Elementary	Sweet Grass School
Middle	Vernon Barford School
High	Harry Ainlay High School

Additional Information

Date Listed	July 3rd, 2025
Days on Market	1
Zoning	Zone 16

DATA IS DEEMED RELIABLE BUT IS NOT GUARANTEED ACCURATE BY THE REALTORS® ASSOCIATION OF EDMONTON. COPYRIGHT 2025 BY THE REALTORS® ASSOCIATION OF EDMONTON. ALL RIGHTS RESERVED.Trademarks are owned or controlled by the Canadian Real Estate Association (CREA) and identify real estate professionals who are members of CREA (REALTOR®, REALTORS®) and/or the quality of services they provide (MLS®, Multiple Listing Service®)

Listing information last updated on July 4th, 2025 at 10:18am MDT