

\$292,500 - 101 1406 Hodgson Way, Edmonton

MLS® #E4445601

\$292,500

2 Bedroom, 2.00 Bathroom, 1,203 sqft

Condo / Townhouse on 0.00 Acres

Hodgson, Edmonton, AB

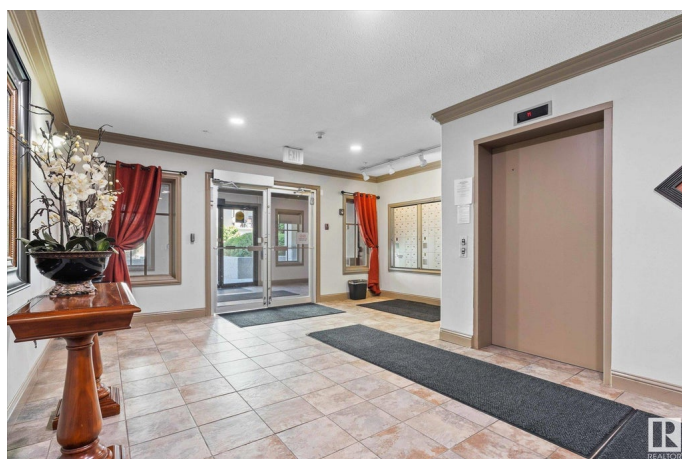
Welcome to The Chateaux at Whitemud Ridge! This conveniently located adult (21+) complex is minutes away from restaurants, shopping, the trails of Whitemud ravine & more! The unit boasts a bright & open floor plan with over 1203 sq.ft., 2 bedrooms, 2 bathrooms, 2 u/g parking stalls (tandem), storage & insuite laundry. Condo has been recently renovated with new laminate flooring thru out main living, dining areas & bedrooms, prof. painted and some new fixtures. The kitchen has dark maple cabinetry, granite counters, s/s appliances & large island with seating for 6! The bedrooms of the unit are spacious, with the primary having a large walk-through closet to the 4-piece ensuite. The second bedroom is also a great size & situated next to the & second 3-piece bathroom. The fabulous balcony off the living room overlooks the courtyard with plenty of room for seating, plants & bbq. This complex has a host of great amenities including a full gym, steam room, games room, party room, car wash bays & theatre room!

Built in 2004

Essential Information

MLS® # E4445601

Price \$292,500



Bedrooms	2
Bathrooms	2.00
Full Baths	2
Square Footage	1,203
Acres	0.00
Year Built	2004
Type	Condo / Townhouse
Sub-Type	Lowrise Apartment
Style	Single Level Apartment
Status	Active

Community Information

Address	101 1406 Hodgson Way
Area	Edmonton
Subdivision	Hodgson
City	Edmonton
County	ALBERTA
Province	AB
Postal Code	T6R 3K1

Amenities

Amenities	Car Wash, Exercise Room, Intercom, Parking-Visitor, Recreation Room/Centre, Secured Parking, Security Door, Social Rooms, Sprinkler System-Fire, Storage Cage
Parking Spaces	2
Parking	Tandem, Underground

Interior

Interior Features	ensuite bathroom
Appliances	Dishwasher-Built-In, Dryer, Garage Control, Microwave Hood Fan, Refrigerator, Stove-Electric, Washer
Heating	Forced Air-1, Heat Pump, Natural Gas
# of Stories	4
Stories	1
Has Basement	Yes
Basement	None, No Basement

Exterior

Exterior	Wood, Stucco
----------	--------------

Exterior Features	Playground Nearby, Public Transportation, Schools, Shopping Nearby
Roof	Tar & Gravel
Construction	Wood, Stucco
Foundation	Concrete Perimeter

Additional Information

Date Listed	July 3rd, 2025
Days on Market	1
Zoning	Zone 14
Condo Fee	\$732

DATA IS DEEMED RELIABLE BUT IS NOT GUARANTEED ACCURATE BY THE REALTORS® ASSOCIATION OF EDMONTON. COPYRIGHT 2025 BY THE REALTORS® ASSOCIATION OF EDMONTON. ALL RIGHTS RESERVED. Trademarks are owned or controlled by the Canadian Real Estate Association (CREA) and identify real estate professionals who are members of CREA (REALTOR®, REALTORS®) and/or the quality of services they provide (MLS®, Multiple Listing Service®)

Listing information last updated on July 4th, 2025 at 3:47am MDT