

# \$549,000 - 11 Labelle Crescent, St. Albert

MLS® #E4445823

**\$549,000**

6 Bedroom, 3.00 Bathroom, 1,207 sqft  
Single Family on 0.00 Acres

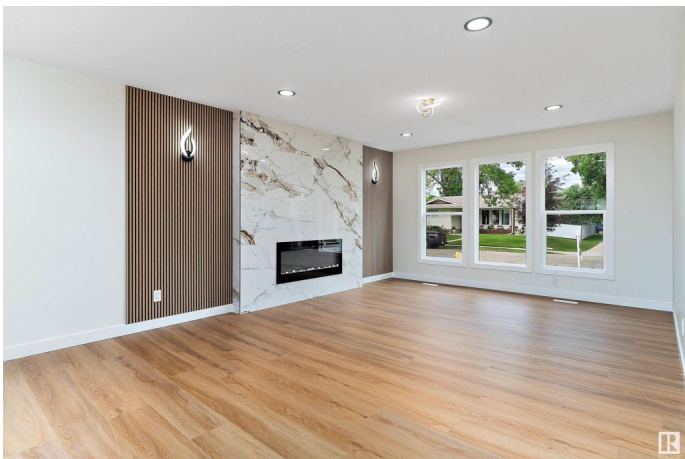
Lacombe Park, St. Albert, AB

Welcome to this stunning single-family home, fully renovated from top to bottom in the heart of St. Albert. Boasting 6 Bedrooms, 3 full bathrooms, and 2 modern kitchens with Brand new appliances, this home offers the perfect blend of style, space, and convenience. Every detail has been updated – including new windows, new siding, new plumbing, new electrical, Fully Landscaped, stylish feature wall with modern electric fireplace, and modern finishes throughout. Don't forget new double detached garage, plus a concrete pad with parking for 5 additional vehicles. Located in a prime location, close to schools, shopping, transit, and all major amenities, this move-in-ready home offers both comfort and exceptional value. A rare find in one of St. Albert's most desirable areas!

Built in 1974

## Essential Information

|                |           |
|----------------|-----------|
| MLS® #         | E4445823  |
| Price          | \$549,000 |
| Bedrooms       | 6         |
| Bathrooms      | 3.00      |
| Full Baths     | 3         |
| Square Footage | 1,207     |
| Acres          | 0.00      |
| Year Built     | 1974      |



|          |                        |
|----------|------------------------|
| Type     | Single Family          |
| Sub-Type | Detached Single Family |
| Style    | Bungalow               |
| Status   | Active                 |

### Community Information

|             |                     |
|-------------|---------------------|
| Address     | 11 Labelle Crescent |
| Area        | St. Albert          |
| Subdivision | Lacombe Park        |
| City        | St. Albert          |
| County      | ALBERTA             |
| Province    | AB                  |
| Postal Code | T8N 2G6             |

### Amenities

|           |  |
|-----------|--|
| Amenities | Detectors Smoke, No Animal Home, No Smoking Home, Parking-Extra, See Remarks |
| Parking   | Double Garage Detached   |

### Interior

|                   |  |
|-------------------|--|
| Interior Features | ensuite bathroom   |
| Appliances        | Dishwasher-Built-In, Dryer, Garage Opener, Microwave Hood Fan, Washer, Refrigerators-Two, Stoves-Two, Dishwasher-Two |
| Heating           | Forced Air-1, Natural Gas  |
| Stories           | 2  |
| Has Suite         | Yes  |
| Has Basement      | Yes  |
| Basement          | Full, Finished   |

### Exterior

|                   |  |
|-------------------|--|
| Exterior          | Wood, Vinyl  |
| Exterior Features | Fenced, Flat Site, Golf Nearby, Landscaped, No Back Lane, Playground Nearby, See Remarks |
| Roof              | Asphalt Shingles   |
| Construction      | Wood, Vinyl  |
| Foundation        | Concrete Perimeter   |

### Additional Information

|                |                |
|----------------|----------------|
| Date Listed    | July 4th, 2025 |
| Days on Market | 7              |

## Zoning

## Zone 24

DATA IS DEEMED RELIABLE BUT IS NOT GUARANTEED ACCURATE BY THE REALTORS® ASSOCIATION OF EDMONTON. COPYRIGHT 2025 BY THE REALTORS® ASSOCIATION OF EDMONTON. ALL RIGHTS RESERVED. Trademarks are owned or controlled by the Canadian Real Estate Association (CREA) and identify real estate professionals who are members of CREA (REALTOR®, REALTORS®) and/or the quality of services they provide (MLS®, Multiple Listing Service®)

Listing information last updated on July 11th, 2025 at 4:32pm MDT