

\$319,000 - 50 2004 Grantham Court, Edmonton

MLS® #E4446184

\$319,000

2 Bedroom, 2.50 Bathroom, 1,185 sqft

Condo / Townhouse on 0.00 Acres

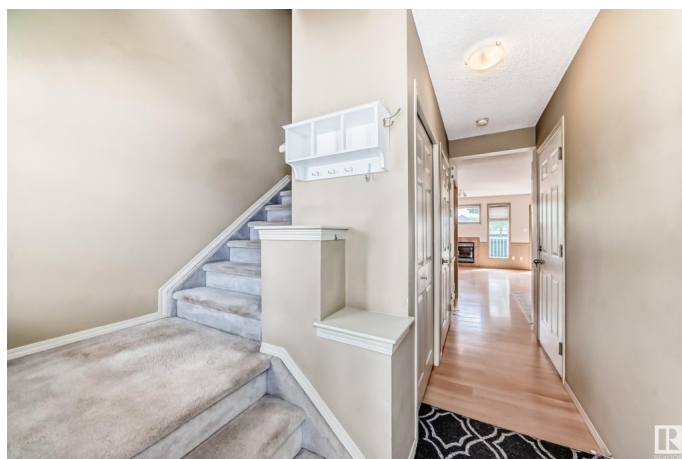
Glastonbury, Edmonton, AB

Welcome home to this well-maintained 1,186 sq ft two-storey half duplex with a single attached garage. Located in the family friendly neighbourhood of Glastonbury. The main floor features a bright living room, dining area, and kitchen, all with laminate flooring throughout and big windows for plenty of light. Upstairs you'll find two spacious primary bedrooms, one with a full ensuite and two walk-in closets + another full bathroom. The unfinished basement offers plenty of room for storage or future development. Enjoy the fully fenced south-west-facing backyard, complete with a nice deck—perfect for relaxing or entertaining. Located close to all amenities, schools, shopping, restaurants, minutes to West Edmonton Mall & with quick access to Anthony Henday and Whitemud Drive. This home offers excellent value and convenience.

Built in 2002

Essential Information

MLS® #	E4446184
Price	\$319,000
Bedrooms	2
Bathrooms	2.50
Full Baths	2
Half Baths	1
Square Footage	1,185



Acres	0.00
Year Built	2002
Type	Condo / Townhouse
Sub-Type	Half Duplex
Style	2 Storey
Status	Active

Community Information

Address	50 2004 Grantham Court
Area	Edmonton
Subdivision	Glastonbury
City	Edmonton
County	ALBERTA
Province	AB
Postal Code	T5T 3X4

Amenities

Amenities	Deck, No Animal Home, No Smoking Home, Vinyl Windows, See Remarks
Parking	Single Garage Attached

Interior

Interior Features	ensuite bathroom
Appliances	Dishwasher-Built-In, Dryer, Garage Control, Garage Opener, Refrigerator, Stove-Electric, Washer
Heating	Forced Air-1, Natural Gas
Stories	2
Has Basement	Yes
Basement	Full, Unfinished

Exterior

Exterior	Wood, Vinyl
Exterior Features	Fenced, Flat Site, Golf Nearby, Landscaped, No Through Road, Playground Nearby, Public Transportation, Schools, Shopping Nearby, See Remarks
Roof	Asphalt Shingles
Construction	Wood, Vinyl
Foundation	Concrete Perimeter

Additional Information

Date Listed	July 6th, 2025
Days on Market	51
Zoning	Zone 58
HOA Fees	63
HOA Fees Freq.	Annually
Condo Fee	\$173

DATA IS DEEMED RELIABLE BUT IS NOT GUARANTEED ACCURATE BY THE REALTORS® ASSOCIATION OF EDMONTON. COPYRIGHT 2025 BY THE REALTORS® ASSOCIATION OF EDMONTON. ALL RIGHTS RESERVED. Trademarks are owned or controlled by the Canadian Real Estate Association (CREA) and identify real estate professionals who are members of CREA (REALTOR®, REALTORS®) and/or the quality of services they provide (MLS®, Multiple Listing Service®)

Listing information last updated on August 26th, 2025 at 2:47am MDT