

## \$225,000 - 217 5390 Chappelle Road, Edmonton

MLS® #E4446608

**\$225,000**

2 Bedroom, 2.00 Bathroom, 969 sqft

Condo / Townhouse on 0.00 Acres

Chappelle Area, Edmonton, AB

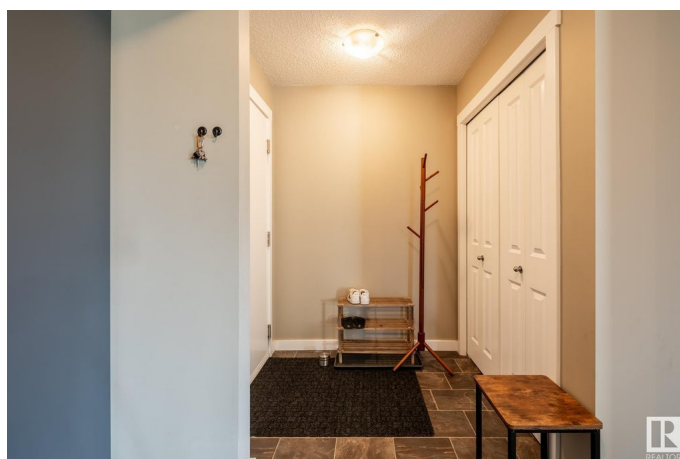
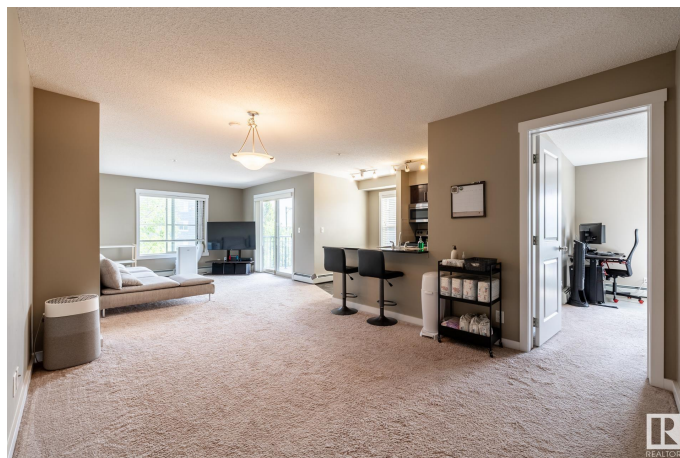
Located in highly sought-after Chappelle, you will love coming home to this lovely 2 bedroom/2 bathroom corner condo, complete with TWO titled, underground parking stalls!

The open-concept living space makes entertaining easy, and the balcony has plenty of room to enjoy the long summer nights. In the kitchen there are stainless steel appliances and granite countertops overlooking spacious living and dining areas - there's even a den for added flex space of your choosing! The primary bedroom has a good sized walk through closet leading to the private ensuite, while the second bedroom, main bathroom, and laundry room complete the unit. Located close to schools, shopping, the airport, and the many amenities in this friendly community, this is a wonderful place to live and start making memories!

Built in 2016

### Essential Information

MLS® #	E4446608
Price	\$225,000
Bedrooms	2
Bathrooms	2.00
Full Baths	2
Square Footage	969
Acres	0.00



Year Built	2016
Type	Condo / Townhouse
Sub-Type	Lowrise Apartment
Style	Single Level Apartment
Status	Active

### Community Information

Address	217 5390 Chappelle Road
Area	Edmonton
Subdivision	Chappelle Area
City	Edmonton
County	ALBERTA
Province	AB
Postal Code	T6W 3K7

### Amenities

Amenities	Detectors Smoke, Intercom, Parking-Visitor, Patio, Secured Parking
Parking Spaces	2
Parking	Heated, Parkade, Underground

### Interior

Interior Features	ensuite bathroom
Appliances	Dishwasher-Built-In, Microwave Hood Fan, Refrigerator, Stacked Washer/Dryer, Stove-Electric, Window Coverings
Heating	Baseboard, Natural Gas
# of Stories	4
Stories	1
Has Basement	Yes
Basement	None, No Basement

### Exterior

Exterior	Wood, Brick, Hardie Board Siding
Exterior Features	Golf Nearby, Playground Nearby, Public Transportation, Schools
Roof	Asphalt Shingles
Construction	Wood, Brick, Hardie Board Siding
Foundation	Concrete Perimeter

### Additional Information

Date Listed	July 8th, 2025
-------------	----------------

Days on Market	55
Zoning	Zone 55
HOA Fees	50
HOA Fees Freq.	Annually
Condo Fee	\$583

DATA IS DEEMED RELIABLE BUT IS NOT GUARANTEED ACCURATE BY THE REALTORS® ASSOCIATION OF EDMONTON. COPYRIGHT 2025 BY THE REALTORS® ASSOCIATION OF EDMONTON. ALL RIGHTS RESERVED. Trademarks are owned or controlled by the Canadian Real Estate Association (CREA) and identify real estate professionals who are members of CREA (REALTOR®, REALTORS®) and/or the quality of services they provide (MLS®, Multiple Listing Service®)

Listing information last updated on September 1st, 2025 at 4:17am MDT