

## \$329,900 - 13512 65 Street, Edmonton

MLS® #E4446772

**\$329,900**

3 Bedroom, 2.00 Bathroom, 1,037 sqft

Single Family on 0.00 Acres

Belvedere, Edmonton, AB

Original owner home in Belvedere. 3 bedroom bungalow with fully finished basement, extra large country style kitchen. A unique and well planned back entrance way. Double detached garage with single door. Newer energy efficient furnace. Great location close to the park and elementary school.

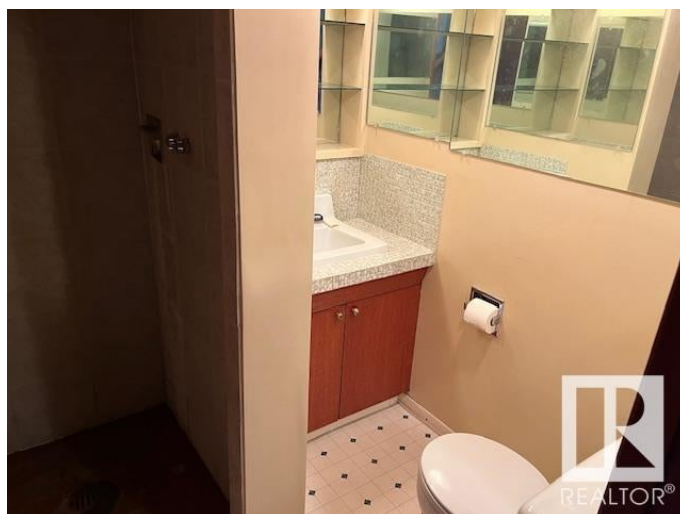
Built in 1966

### Essential Information

MLS® #	E4446772
Price	\$329,900
Bedrooms	3
Bathrooms	2.00
Full Baths	2
Square Footage	1,037
Acres	0.00
Year Built	1966
Type	Single Family
Sub-Type	Detached Single Family
Style	Bungalow
Status	Active

### Community Information

Address	13512 65 Street
Area	Edmonton
Subdivision	Belvedere



City	Edmonton
County	ALBERTA
Province	AB
Postal Code	T5A 1A4

### **Amenities**

Amenities	See Remarks
Parking	Double Garage Detached

### **Interior**

Appliances	Dishwasher-Built-In, Dryer, Refrigerator, Washer
Heating	Forced Air-1, Natural Gas
Stories	2
Has Basement	Yes
Basement	Full, Finished

### **Exterior**

Exterior	Wood, Stucco, Vinyl
Exterior Features	Public Transportation, Schools, See Remarks
Roof	Asphalt Shingles
Construction	Wood, Stucco, Vinyl
Foundation	Concrete Perimeter

### **Additional Information**

Date Listed	July 8th, 2025
Days on Market	52
Zoning	Zone 02

DATA IS DEEMED RELIABLE BUT IS NOT GUARANTEED ACCURATE BY THE REALTORS® ASSOCIATION OF EDMONTON. COPYRIGHT 2025 BY THE REALTORS® ASSOCIATION OF EDMONTON. ALL RIGHTS RESERVED. Trademarks are owned or controlled by the Canadian Real Estate Association (CREA) and identify real estate professionals who are members of CREA (REALTOR®, REALTORS®) and/or the quality of services they provide (MLS®, Multiple Listing Service®)

Listing information last updated on August 29th, 2025 at 1:32am MDT