

## \$100,000 - 2 Sunset Harbour, Rural Wetaskiwin County

MLS® #E4447043

**\$100,000**

0 Bedroom, 0.00 Bathroom,

Rural on 0.16 Acres

Sunset Harbour, Rural Wetaskiwin County, AB

Wonderful Lake lot on Pigeon Lake that backs onto the lake located on a cul-de-sac. Private marina with boat launch, playground, tennis court, basket ball area, Year round living, at it's finest! Close to all amenities and only 1 hour from west Edmonton. If you enjoy fishing/Ice fishing, tennis, golf, snowmobiling, quadding or just relaxing at the lake, this is the place for you!

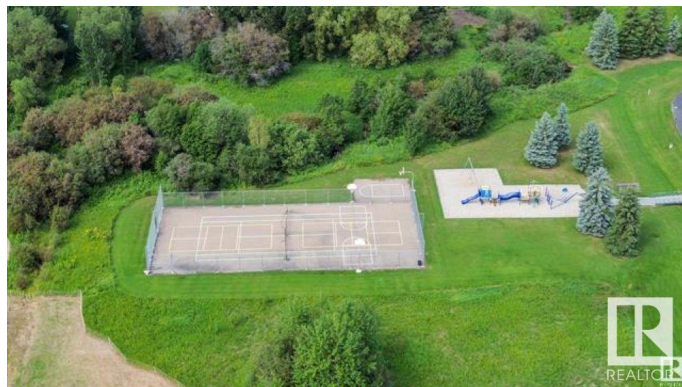
Built in 2007

### Essential Information

MLS® #	E4447043
Price	\$100,000
Bathrooms	0.00
Acres	0.16
Year Built	2007
Type	Rural
Sub-Type	Vacant Lot/Land
Status	Active

### Community Information

Address	2 Sunset Harbour
Area	Rural Wetaskiwin County
Subdivision	Sunset Harbour
City	Rural Wetaskiwin County
County	ALBERTA
Province	AB



Postal Code            T0C 2V0

**Exterior**

Exterior Features    Backs Onto Lake, Boating, Cul-De-Sac, Gated Community, Golf Nearby, Lake View, No Back Lane, Paved Lane, Playground Nearby, Shopping Nearby

**Additional Information**

Date Listed            July 10th, 2025

Days on Market       47

Zoning                 Zone 95

Condo Fee             \$350

DATA IS DEEMED RELIABLE BUT IS NOT GUARANTEED ACCURATE BY THE REALTORS® ASSOCIATION OF EDMONTON. COPYRIGHT 2025 BY THE REALTORS® ASSOCIATION OF EDMONTON. ALL RIGHTS RESERVED.Trademarks are owned or controlled by the Canadian Real Estate Association (CREA) and identify real estate professionals who are members of CREA (REALTOR®, REALTORS®) and/or the quality of services they provide (MLS®, Multiple Listing Service®)

Listing information last updated on August 25th, 2025 at 11:32pm MDT