

## **\$670,000 - 2108 Trumpeter Way, Edmonton**

MLS® #E4447159

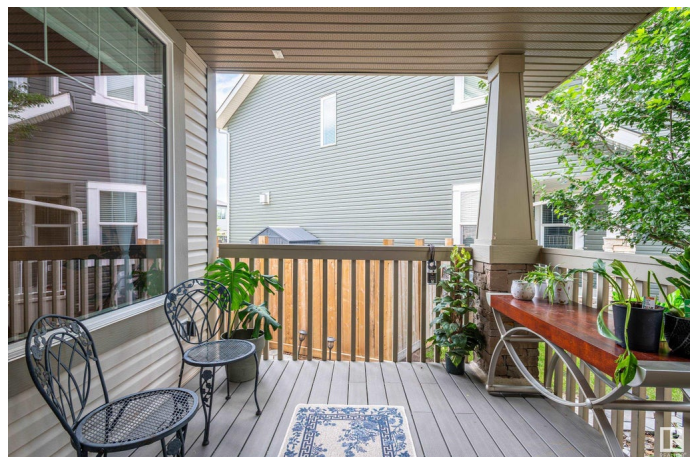
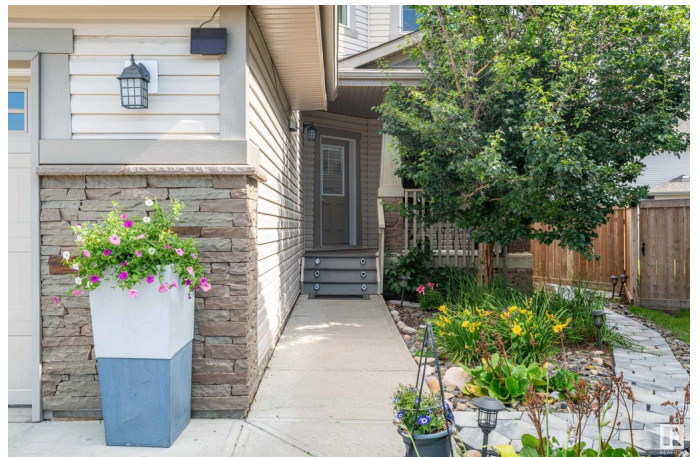
**\$670,000**

4 Bedroom, 2.50 Bathroom, 2,286 sqft

Single Family on 0.00 Acres

Trumpeter Area, Edmonton, AB

Welcome to your dream home in Trumpeter! This stunning former show home boasts 2285sqft of pure luxury on a huge pie-shaped lot. Step onto the expansive front porch w/ durable composite deckingâ€”perfect for relaxing or entertaining. Inside, discover 5 spacious bedrooms + a bonus room w/ soaring vaulted ceilings that wow at every turn. Host elegant dinners in the formal dining room or whip up culinary delights in the gourmet kitchen feat. textured glass cabinets & a chic two-tiered island w/ built-in wine rack. Gleaming hardwood flows through the main living area, centered around a cozy gas fireplace w/ modern feature wall. Need versatility? The flex room is an ideal office or guest retreat. Upstairs, the primary suite pampers you w/ a huge walk-in closet & a spa-like 5pc ensuite. Enjoy a finished basement w/ an extra bedroom, central AC, & a built-in Sonos Sound System. Outside, the beautifully landscaped backyard shines w/ an oversized triple-tiered deckâ€”your private oasis for summer fun. So much to love!



Built in 2012

### **Essential Information**

MLS® # E4447159

Price \$670,000

|                |                        |
|----------------|------------------------|
| Bedrooms       | 4                      |
| Bathrooms      | 2.50                   |
| Full Baths     | 2                      |
| Half Baths     | 1                      |
| Square Footage | 2,286                  |
| Acres          | 0.00                   |
| Year Built     | 2012                   |
| Type           | Single Family          |
| Sub-Type       | Detached Single Family |
| Style          | 2 Storey               |
| Status         | Active                 |

### Community Information

|             |                    |
|-------------|--------------------|
| Address     | 2108 Trumpeter Way |
| Area        | Edmonton           |
| Subdivision | Trumpeter Area     |
| City        | Edmonton           |
| County      | ALBERTA            |
| Province    | AB                 |
| Postal Code | T5S 0G1            |

### Amenities

|           |   |
|-----------|---|
| Amenities | Air Conditioner, Closet Organizers, Deck, Detectors Smoke, Fire Pit, Front Porch, No Animal Home, No Smoking Home, Vaulted Ceiling, Vinyl Windows, Natural Gas BBQ Hookup |
| Parking   | Double Garage Attached, Front Drive Access, Insulated   |

### Interior

|                   |   |
|-------------------|---|
| Interior Features | ensuite bathroom  |
| Appliances        | Air Conditioning-Central, Dishwasher-Built-In, Dryer, Freezer, Garage Control, Garage Opener, Microwave Hood Fan, Refrigerator, Stove-Electric, Washer, Window Coverings, TV Wall Mount |
| Heating           | Forced Air-1, Natural Gas   |
| Fireplace         | Yes   |
| Fireplaces        | Mantel, Tile Surround   |
| Stories           | 3   |
| Has Basement      | Yes   |
| Basement          | Full, Finished  |

### Exterior

|                   |   |
|-------------------|---|
| Exterior          | Wood, Stone, Vinyl  |
| Exterior Features | Cul-De-Sac, Environmental Reserve, Fenced, Flat Site, Golf Nearby, Landscaped, Level Land, No Back Lane, Picnic Area, Playground Nearby, Public Transportation, Schools |
| Roof              | Asphalt Shingles  |
| Construction      | Wood, Stone, Vinyl  |
| Foundation        | Concrete Perimeter  |

**Additional Information**

|             |                 |
|-------------|-----------------|
| Date Listed | July 11th, 2025 |
| Zoning      | Zone 59         |

DATA IS DEEMED RELIABLE BUT IS NOT GUARANTEED ACCURATE BY THE REALTORS® ASSOCIATION OF EDMONTON. COPYRIGHT 2025 BY THE REALTORS® ASSOCIATION OF EDMONTON. ALL RIGHTS RESERVED.Trademarks are owned or controlled by the Canadian Real Estate Association (CREA) and identify real estate professionals who are members of CREA (REALTOR®, REALTORS®) and/or the quality of services they provide (MLS®, Multiple Listing Service®)

Listing information last updated on July 11th, 2025 at 8:18am MDT