

\$204,900 - 9359 172 Street, Edmonton

MLS® #E4447190

\$204,900

2 Bedroom, 1.00 Bathroom, 1,152 sqft
Condo / Townhouse on 0.00 Acres

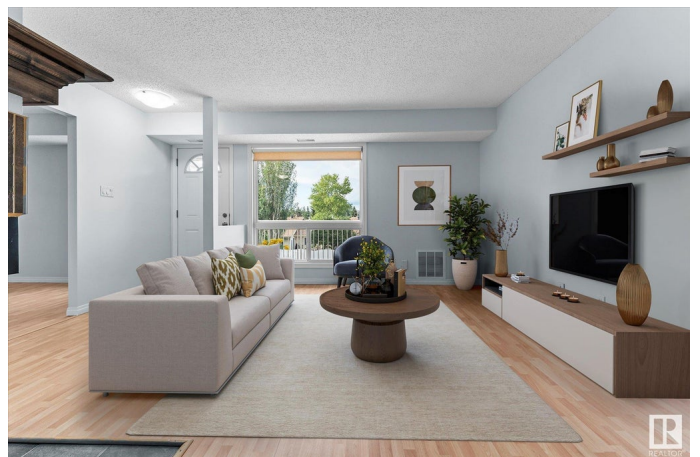
Summerlea, Edmonton, AB

Welcome Home! We are thrilled to present this light and airy 2-bedroom carriage home, which offers incredible flexibility to suit your needs. Originally a three-bedroom unit, it can easily be converted back to a third bedroom or maintained as a spacious office, providing versatile living options. As a corner unit, this home boasts an abundance of large windows that fill the space with natural light, creating a bright and expansive atmosphere. You'll appreciate the generously sized bedrooms, complete with ample walk-in closets. The kitchen features a huge pantry room, and the dream laundry area adds to the home's practical appeal, making it a truly perfect fit. Its prime location provides convenient access to a wide array of amenities and shopping, making this a truly desirable place to live. This property offers an excellent opportunity for a starter home, combining comfort, convenience, and adaptability. Some photos are virtually staged.

Built in 1980

Essential Information

MLS® #	E4447190
Price	\$204,900
Bedrooms	2
Bathrooms	1.00



Full Baths	1
Square Footage	1,152
Acres	0.00
Year Built	1980
Type	Condo / Townhouse
Sub-Type	Carriage
Style	Bungalow
Status	Active

Community Information

Address	9359 172 Street
Area	Edmonton
Subdivision	Summerlea
City	Edmonton
County	ALBERTA
Province	AB
Postal Code	T5T 5R6

Amenities

Amenities	Deck, Storage-In-Suite
Parking Spaces	1
Parking	Stall

Interior

Appliances	Dishwasher-Built-In, Dryer, Hood Fan, Oven-Microwave, Refrigerator, Stove-Electric, Washer, Window Coverings
Heating	Forced Air-1, Natural Gas
Fireplace	Yes
Fireplaces	Corner, Tile Surround
Stories	1
Has Basement	Yes
Basement	None, No Basement

Exterior

Exterior	Wood, Stucco, Vinyl
Exterior Features	Shopping Nearby
Roof	Asphalt Shingles
Construction	Wood, Stucco, Vinyl
Foundation	Concrete Perimeter

Additional Information

Date Listed	July 9th, 2025
Days on Market	4
Zoning	Zone 20
Condo Fee	\$363

DATA IS DEEMED RELIABLE BUT IS NOT GUARANTEED ACCURATE BY THE REALTORS® ASSOCIATION OF EDMONTON. COPYRIGHT 2025 BY THE REALTORS® ASSOCIATION OF EDMONTON. ALL RIGHTS RESERVED.Trademarks are owned or controlled by the Canadian Real Estate Association (CREA) and identify real estate professionals who are members of CREA (REALTOR®, REALTORS®) and/or the quality of services they provide (MLS®, Multiple Listing Service®)

Listing information last updated on July 13th, 2025 at 4:32pm MDT