

# \$589,900 - 16808 30 Avenue, Edmonton

MLS® #E4447302

**\$589,900**

4 Bedroom, 2.50 Bathroom, 2,067 sqft

Single Family on 0.00 Acres

Glenridding Ravine, Edmonton, AB

Welcome to this well-maintained 2,066 sq ft 4-bedroom, 2.5-bath two-storey home in the vibrant community of Glenridding Ravine. Built in 2023, this modern home features a double attached garage, smart lights on the front of the house, and a fully landscaped yard. The open-concept main floor offers open to above ceilings, a stylish kitchen with stainless steel appliances, garbage disposal, walk-in pantry, and durable laminate flooring throughout. The cozy living room features an electric fireplace, and there's a convenient 2-piece bath plus a spacious main floor bedroom. Upstairs, you'll find a large primary bedroom with a walk-in closet and 5-piece ensuite, two additional bedrooms, a 3-piece bath, and a laundry room. The bright unfinished basement is ready for your personal touch. Located near schools, shopping, parks, and walking trails with easy access to 41 Ave SW, James Mowatt Trail, and the Henday, this home offers comfort, convenience, and room to grow – all it needs is YOU!

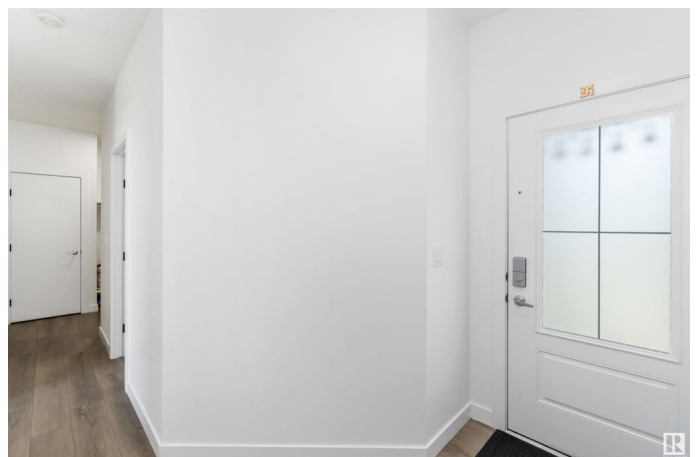
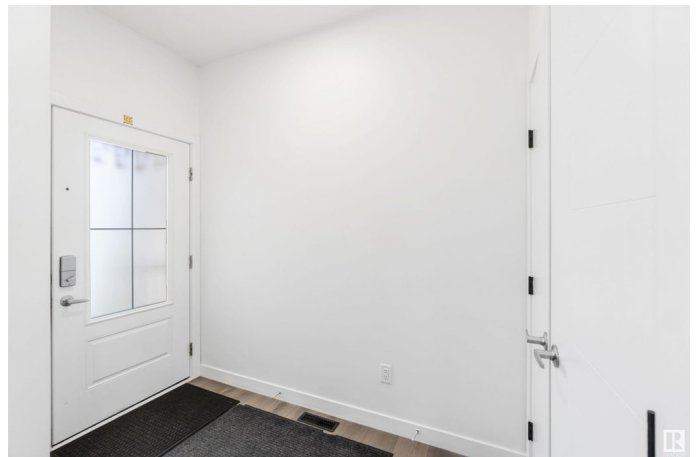
Built in 2022

## Essential Information

MLS® # E4447302

Price \$589,900

Bedrooms 4



|                |                        |
|----------------|------------------------|
| Bathrooms      | 2.50                   |
| Full Baths     | 2                      |
| Half Baths     | 1                      |
| Square Footage | 2,067                  |
| Acres          | 0.00                   |
| Year Built     | 2022                   |
| Type           | Single Family          |
| Sub-Type       | Detached Single Family |
| Style          | 2 Storey               |
| Status         | Active                 |

### Community Information

|             |                    |
|-------------|--------------------|
| Address     | 16808 30 Avenue    |
| Area        | Edmonton           |
| Subdivision | Glenridding Ravine |
| City        | Edmonton           |
| County      | ALBERTA            |
| Province    | AB                 |
| Postal Code | T6W 5A3            |

### Amenities

|                |                                |
|----------------|--------------------------------|
| Amenities      | Ceiling 9 ft., Detectors Smoke |
| Parking Spaces | 4                              |
| Parking        | Double Garage Attached         |

### Interior

|                   |  |
|-------------------|--|
| Interior Features | ensuite bathroom   |
| Appliances        | Dishwasher-Built-In, Dryer, Garage Control, Garage Opener, Hood Fan, Refrigerator, Stove-Gas, Washer, Window Coverings |
| Heating           | Forced Air-1, Natural Gas  |
| Fireplace         | Yes  |
| Fireplaces        | Mantel   |
| Stories           | 2  |
| Has Basement      | Yes  |
| Basement          | Full, Unfinished   |

### Exterior

|                   |   |
|-------------------|---|
| Exterior          | Wood, Stone, Vinyl  |
| Exterior Features | Fenced, Flat Site, Golf Nearby, Landscaped, Level Land, No Back Lane, |

Playground Nearby, Public Transportation, Schools, Shopping Nearby,  
Ski Hill Nearby

|              |                    |
|--------------|--------------------|
| Roof         | Asphalt Shingles   |
| Construction | Wood, Stone, Vinyl |
| Foundation   | Concrete Perimeter |

### **School Information**

|            |                       |
|------------|-----------------------|
| Elementary | George H. Luck School |
| Middle     | Riverbend School      |
| High       | Strathcona School     |

### **Additional Information**

|                |                 |
|----------------|-----------------|
| Date Listed    | July 11th, 2025 |
| Days on Market | 54              |
| Zoning         | Zone 56         |

DATA IS DEEMED RELIABLE BUT IS NOT GUARANTEED ACCURATE BY THE REALTORS® ASSOCIATION OF EDMONTON. COPYRIGHT 2025 BY THE REALTORS® ASSOCIATION OF EDMONTON. ALL RIGHTS RESERVED. Trademarks are owned or controlled by the Canadian Real Estate Association (CREA) and identify real estate professionals who are members of CREA (REALTOR®, REALTORS®) and/or the quality of services they provide (MLS®, Multiple Listing Service®)

Listing information last updated on September 3rd, 2025 at 5:17am MDT