

# **\$975,000 - 1128 Twp Road 544, Rural Lac Ste. Anne County**

MLS® #E4448016

**\$975,000**

3 Bedroom, 3.00 Bathroom, 2,653 sqft

Rural on 41.97 Acres

None, Rural Lac Ste. Anne County, AB

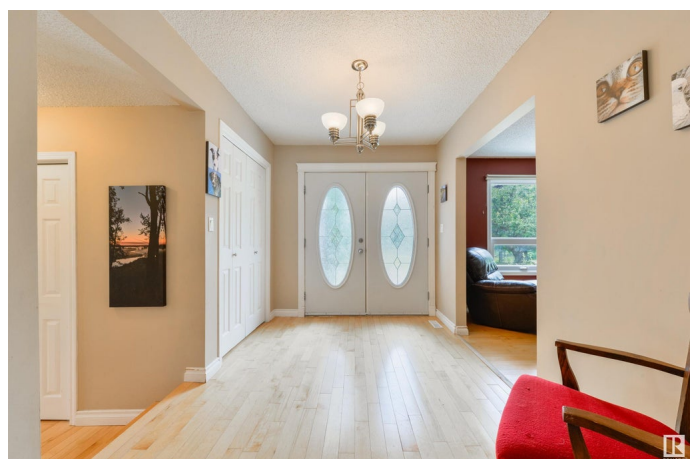
This is paradise! This sprawling 2653sqft brick faced bungalow with Central AC situated on 41.97 of rolling picturesque acres is a true sight to behold. Step inside the front doors to an open entrance that branches off to two spacious living areas with a double sided wood burning FP, a formal dining room, The country style kitchen features granite countertops, an abundance of cupboard space and a central island. A generous sized primary bedroom with double doors leading to a large deck and 3pc ensuite, Two spacious bedrooms, a 4pc main bath and a large flex area with double doors that lead to a deck, the huge rec room in the basement completes this amazing home. The exterior of the home is your own personal paradise featuring a 20x40 heated inground swimming pool, a stamped concrete patio with a wood gazebo, fire pit and pond, a 36x42 horse stable and a 35x65 heated shop. Fenced and crossed fenced with a private gate at the entrance. Just a 15 minute drive to Stony Plain, this home is truly a must see!

Built in 1974

## **Essential Information**

MLS® # E4448016

Price \$975,000



Bedrooms	3
Bathrooms	3.00
Full Baths	3
Square Footage	2,653
Acres	41.97
Year Built	1974
Type	Rural
Sub-Type	Detached Single Family
Style	Bungalow
Status	Active

### **Community Information**

Address	1128 Twp Road 544
Area	Rural Lac Ste. Anne County
Subdivision	None
City	Rural Lac Ste. Anne County
County	ALBERTA
Province	AB
Postal Code	T0E 1V0

### **Amenities**

Features	Air Conditioner, Deck, Fire Pit, Gazebo, Patio, Pool-Outdoor, Vinyl Windows, Workshop, See Remarks
----------	--

### **Interior**

Interior Features	ensuite bathroom
Heating	Forced Air-2, Natural Gas
Fireplace	Yes
Stories	2
Has Basement	Yes
Basement	Full, Finished

### **Exterior**

Exterior	Wood
Exterior Features	Cross Fenced, Landscaped, Private Setting, Rolling Land, See Remarks
Construction	Wood
Foundation	Concrete Perimeter

### **Additional Information**

Date Listed July 15th, 2025

Days on Market 4

Zoning Zone 70

DATA IS DEEMED RELIABLE BUT IS NOT GUARANTEED ACCURATE BY THE REALTORS® ASSOCIATION OF EDMONTON. COPYRIGHT 2025 BY THE REALTORS® ASSOCIATION OF EDMONTON. ALL RIGHTS RESERVED. Trademarks are owned or controlled by the Canadian Real Estate Association (CREA) and identify real estate professionals who are members of CREA (REALTOR®, REALTORS®) and/or the quality of services they provide (MLS®, Multiple Listing Service®)

Listing information last updated on July 19th, 2025 at 7:02am MDT