

Courtesy Of Sharon M Josey Of RE/MAX River City

## \$399,900 - 10951 118 Street, Edmonton

MLS® #E4448075

**\$399,900**

3 Bedroom, 2.00 Bathroom, 1,087 sqft  
Single Family on 0.00 Acres

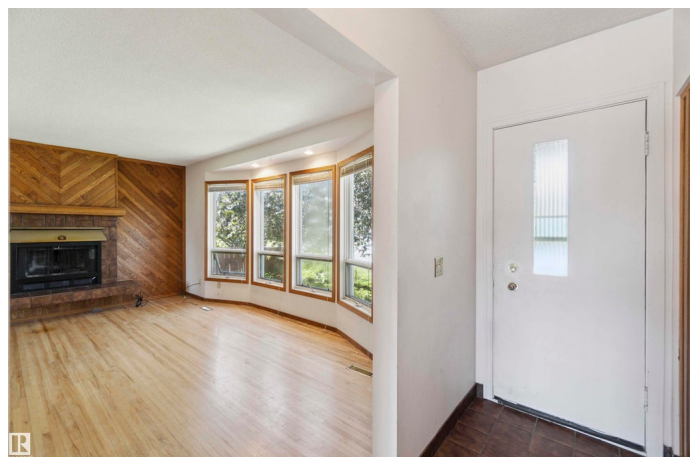
Queen Mary Park, Edmonton, AB

Queen Mary Park a warm & welcoming community ideal for families, offering convenient access to schools, shopping, public trans & steps away from Queen Mary Park. This charming Bung offers over 2,000 sq ft of lvg space, complete with a sgl det gar. The bright & inviting LR is highlighted by Lg windows that fill the space with natural light, complemented by a cozy WB FP. The thoughtfully designed kitch features a peninsula island for added functionality & opens to a spacious dining area with patio drs that lead to a lg deck. Down the hall, youâ€™™ll find 2 generously sized bdrms & a well appointed 4pc bath. The fully dev bsmt enhances the homeâ€™™s versatility, offering a 3rd bdrm, a 2nd 4pc bath, & a spacious Bonus Rm ideal for a FR or entertainment Ctr. Step outside to Grampaâ€™™s lovingly landscaped & fenced backyard, featuring mature trees & shrubs including an apple tree, raspberries, and gooseberries creating a peaceful retreat. upgrades include Shingles (2018) Furn & HWT (2024), New Lam Fl in the bsmt.

Built in 1951

### Essential Information

MLS® #	E4448075
Price	\$399,900



Bedrooms	3
Bathrooms	2.00
Full Baths	2
Square Footage	1,087
Acres	0.00
Year Built	1951
Type	Single Family
Sub-Type	Detached Single Family
Style	Bungalow
Status	Active

### **Community Information**

Address	10951 118 Street
Area	Edmonton
Subdivision	Queen Mary Park
City	Edmonton
County	ALBERTA
Province	AB
Postal Code	T5H 3P1

### **Amenities**

Amenities	On Street Parking, Deck
Parking	Single Garage Detached

### **Interior**

Appliances	Dryer, Freezer, Garage Opener, Stove-Electric, Window Coverings
Heating	Forced Air-1, Natural Gas
Fireplace	Yes
Fireplaces	Mantel, Tile Surround
Stories	2
Has Basement	Yes
Basement	Full, Finished

### **Exterior**

Exterior	Wood
Exterior Features	Back Lane, Fenced, Fruit Trees/Shrubs, Playground Nearby, Public Transportation, Schools, Shopping Nearby
Roof	Asphalt Shingles
Construction	Wood

Foundation                      Block

**Additional Information**

Date Listed                      July 16th, 2025

Days on Market                52

Zoning                            Zone 08

DATA IS DEEMED RELIABLE BUT IS NOT GUARANTEED ACCURATE BY THE REALTORS® ASSOCIATION OF EDMONTON. COPYRIGHT 2025 BY THE REALTORS® ASSOCIATION OF EDMONTON. ALL RIGHTS RESERVED.Trademarks are owned or controlled by the Canadian Real Estate Association (CREA) and identify real estate professionals who are members of CREA (REALTOR®, REALTORS®) and/or the quality of services they provide (MLS®, Multiple Listing Service®)

Listing information last updated on September 6th, 2025 at 3:02am MDT