

\$419,500 - #32 47018 Twp Rd 604a, Rural Bonnyville M.D.

MLS® #E4448271

\$419,500

4 Bedroom, 2.50 Bathroom, 1,465 sqft

Rural on 0.23 Acres

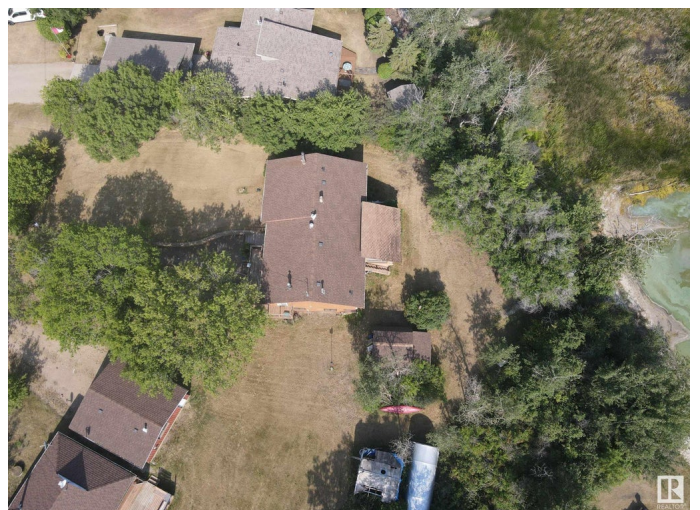
Nicholson Subdivision, Rural Bonnyville M.D., AB

Lakefront Living in Nicholson subdivision!! Here's your opportunity to enjoy life on the shores of beautiful Moose Lake. This 1,465 sq/ft bi-level home features 4 bedrooms and 3 bathrooms, offering plenty of space for family and guests. The spacious eat-in kitchen opens onto a covered deck with scenic views of the water – perfect for morning coffee or evening relaxation. The bright and inviting living room boasts large south-facing windows and access to a second deck, ideal for soaking up the sun. The primary bedroom includes ample closet space and a private 3-piece ensuite, with two additional large bedrooms and a full 4-piece bath completing the main floor. The walk-out lower level includes direct access to the attached garage, a fourth bedroom with a 2-piece ensuite, and a generous family room with more south-facing windows that flood the space with natural light.

Built in 1980

Essential Information

MLS® #	E4448271
Price	\$419,500
Bedrooms	4
Bathrooms	2.50



Full Baths	2
Half Baths	1
Square Footage	1,465
Acres	0.23
Year Built	1980
Type	Rural
Sub-Type	Detached Single Family
Style	Bi-Level
Status	Active

Community Information

Address	#32 47018 Twp Rd 604a
Area	Rural Bonnyville M.D.
Subdivision	Nicholson Subdivision
City	Rural Bonnyville M.D.
County	ALBERTA
Province	AB
Postal Code	T9N 2J6

Amenities

Features	Deck
----------	------

Interior

Interior Features	ensuite bathroom
Heating	Forced Air-1, Natural Gas
Fireplace	Yes
Stories	2
Has Basement	Yes
Basement	Full, Partially Finished

Exterior

Exterior	Wood
Exterior Features	Lake View, Landscaped, Waterfront Property
Construction	Wood
Foundation	Concrete Perimeter

Additional Information

Date Listed	July 16th, 2025
Days on Market	3

Zoning

Zone 65

DATA IS DEEMED RELIABLE BUT IS NOT GUARANTEED ACCURATE BY THE REALTORS® ASSOCIATION OF EDMONTON. COPYRIGHT 2025 BY THE REALTORS® ASSOCIATION OF EDMONTON. ALL RIGHTS RESERVED. Trademarks are owned or controlled by the Canadian Real Estate Association (CREA) and identify real estate professionals who are members of CREA (REALTOR®, REALTORS®) and/or the quality of services they provide (MLS®, Multiple Listing Service®)

Listing information last updated on July 19th, 2025 at 12:02pm MDT