

\$349,000 - 11331 84 St Street, Edmonton

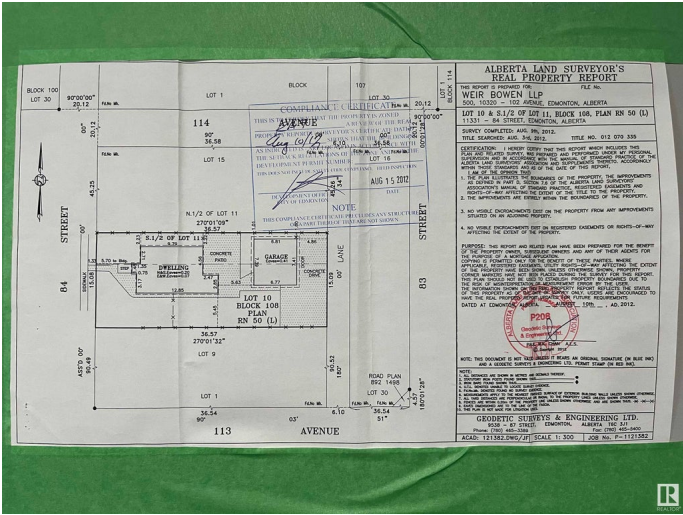
MLS® #E4448367

\$349,000

0 Bedroom, 0.00 Bathroom,
Single Family on 0.00 Acres

Parkdale (Edmonton), Edmonton, AB

Medium Scale Residential (RM h16) Empty Lot available to buy immediately. Permitted use-Backyard Housing, Duplex Housing, Lodging Houses, Multi-unit Housing, Row Housing, Secondary Suites, Semi-detached Housing, Single Detached Housing, and Supportive Housing. You can build a day care, food and drink service, etc. Buyer may be able to build a fourplex or a triplex with legal basement suites at this lot. Excellent location for rental potentials. Close to Stadium LRT station, bus stops, grocery, etc.



Essential Information

MLS® #	E4448367
Price	\$349,000
Bathrooms	0.00
Acres	0.00
Type	Single Family
Sub-Type	Vacant Lot/Land
Status	Active

Community Information

Address	11331 84 St Street
Area	Edmonton
Subdivision	Parkdale (Edmonton)
City	Edmonton
County	ALBERTA

Province AB
Postal Code T5B 3B3

Exterior

Exterior Features Back Lane, Commercial, Flat Site, Level Land, Playground Nearby

Additional Information

Date Listed July 17th, 2025
Days on Market 57
Zoning Zone 05

DATA IS DEEMED RELIABLE BUT IS NOT GUARANTEED ACCURATE BY THE REALTORS® ASSOCIATION OF EDMONTON. COPYRIGHT 2025 BY THE REALTORS® ASSOCIATION OF EDMONTON. ALL RIGHTS RESERVED.Trademarks are owned or controlled by the Canadian Real Estate Association (CREA) and identify real estate professionals who are members of CREA (REALTOR®, REALTORS®) and/or the quality of services they provide (MLS®, Multiple Listing Service®)
Listing information last updated on September 12th, 2025 at 5:32pm MDT