

# **\$615,000 - 8 465070 Rge Road 20, Rural Wetaskiwin County**

MLS® #E4448368

**\$615,000**

3 Bedroom, 2.00 Bathroom, 1,821 sqft

Rural on 2.16 Acres

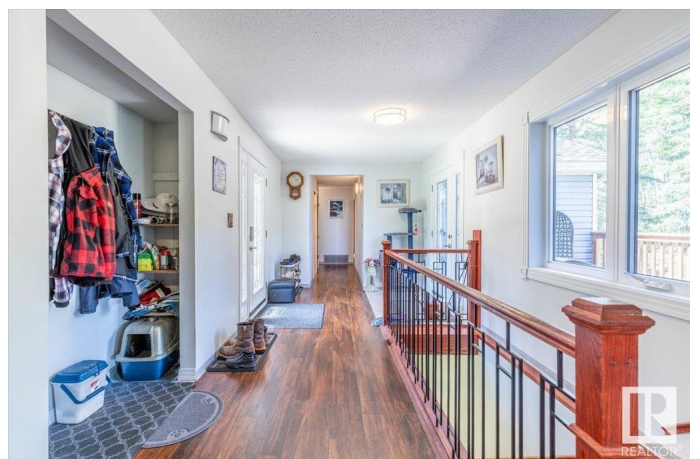
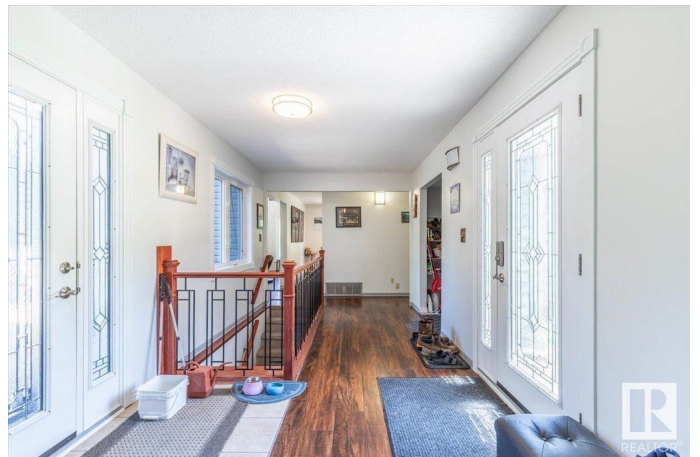
Parkway Heights, Rural Wetaskiwin County,  
AB

Welcome to your private 2.16-acre country retreat! This charming 3-bedroom home offers a peaceful setting surrounded by mature trees and a variety of fruit trees. Inside, enjoy the warmth of a stunning stone fireplace, perfect for cozy evenings. Recent upgrades include 50-year shingles, new windows, and new exterior doors—giving peace of mind for years to come. Outside, you'll find not one, but two double detached garages, ideal for vehicles, toys, or workshop space. The spacious yard provides plenty of room for gardening, outdoor projects, or family gatherings. Located with easy access to local amenities yet offering the privacy of country living, this property checks all the boxes. Whether you're looking for a family home, a weekend escape, or a hobby acreage, this property is a must-see!

Built in 1983

## **Essential Information**

MLS® #	E4448368
Price	\$615,000
Bedrooms	3
Bathrooms	2.00



Full Baths	2
Square Footage	1,821
Acres	2.16
Year Built	1983
Type	Rural
Sub-Type	Detached Single Family
Style	Bungalow
Status	Active

### Community Information

Address	8 465070 Rge Road 20
Area	Rural Wetaskiwin County
Subdivision	Parkway Heights
City	Rural Wetaskiwin County
County	ALBERTA
Province	AB
Postal Code	T9A 1V5

### Amenities

Features	Deck, No Smoking Home, Vinyl Windows
----------	--------------------------------------

### Interior

Interior Features	ensuite bathroom
Heating	Forced Air-1, Natural Gas
Fireplace	Yes
Stories	2
Has Basement	Yes
Basement	Full, Finished

### Exterior

Exterior	Wood
Exterior Features	Boating, Fruit Trees/Shrubs, Golf Nearby, Landscaped, Private Setting, Schools, Shopping Nearby
Construction	Wood
Foundation	Concrete Perimeter

### Additional Information

Date Listed	July 17th, 2025
Days on Market	55

## Zoning

## Zone 90

DATA IS DEEMED RELIABLE BUT IS NOT GUARANTEED ACCURATE BY THE REALTORS® ASSOCIATION OF EDMONTON. COPYRIGHT 2025 BY THE REALTORS® ASSOCIATION OF EDMONTON. ALL RIGHTS RESERVED. Trademarks are owned or controlled by the Canadian Real Estate Association (CREA) and identify real estate professionals who are members of CREA (REALTOR®, REALTORS®) and/or the quality of services they provide (MLS®, Multiple Listing Service®)

Listing information last updated on September 10th, 2025 at 1:32pm MDT