

\$465,000 - 44 50 Edinburgh Crt, St. Albert

MLS® #E4448405

\$465,000

2 Bedroom, 3.50 Bathroom, 1,492 sqft
Condo / Townhouse on 0.00 Acres

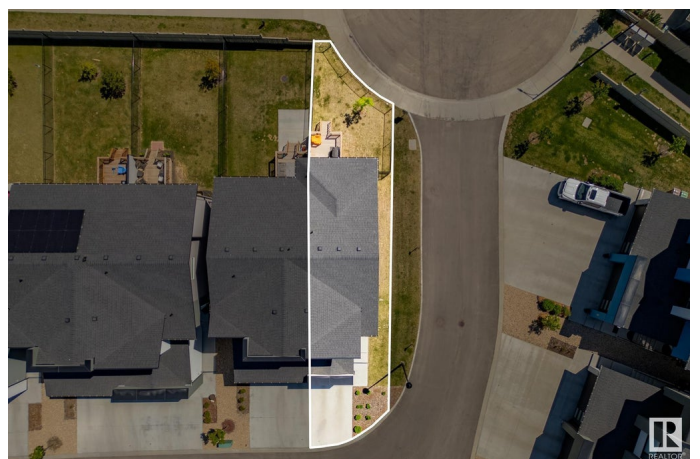
Erin Ridge North, St. Albert, AB

Nearly 2,000 sq.ft. of living space, two primary bedrooms with ensuites, a finished basement, air conditioning, and low condo fees make this corner unit a standout in Erin Ridge North. The bright main floor features quartz countertops, upgraded stainless steel appliances, and a gas range—perfect for cooking and entertaining. Enjoy the sunny south-facing deck and fenced yard, ideal for BBQs and morning coffee. Upstairs offers two spacious primary suites, each with walk-in closets and full ensuites. The professionally finished basement includes a large rec room, home gym space, storage, and a spa-like 3-piece bath with a rainfall shower. Complete with an attached garage and located just minutes from Costco, Walmart, Home Depot, Landmark Cinemas, restaurants, trails, and schools—this home checks all the boxes!

Built in 2021

Essential Information

MLS® #	E4448405
Price	\$465,000
Bedrooms	2
Bathrooms	3.50
Full Baths	3
Half Baths	1
Square Footage	1,492



Acres	0.00
Year Built	2021
Type	Condo / Townhouse
Sub-Type	Half Duplex
Style	2 Storey
Status	Active

Community Information

Address	44 50 Edinburgh Crt
Area	St. Albert
Subdivision	Erin Ridge North
City	St. Albert
County	ALBERTA
Province	AB
Postal Code	T8N 7X5

Amenities

Amenities	Air Conditioner, Deck, Detectors Smoke, Hot Water Natural Gas, No Animal Home, No Smoking Home, Vinyl Windows, See Remarks
Parking	Single Garage Attached

Interior

Interior Features	ensuite bathroom
Appliances	Air Conditioning-Central, Alarm/Security System, Dishwasher-Built-In, Dryer, Garage Control, Garage Opener, Garburator, Oven-Microwave, Refrigerator, Stove-Gas, Washer, Window Coverings
Heating	Forced Air-1, Natural Gas
Stories	3
Has Basement	Yes
Basement	Full, Finished

Exterior

Exterior	Wood, Vinyl
Exterior Features	Backs Onto Park/Trees, Fenced, Golf Nearby, Landscaped, Playground Nearby, Public Transportation, Schools, Shopping Nearby, See Remarks
Roof	Asphalt Shingles
Construction	Wood, Vinyl
Foundation	Concrete Perimeter

Additional Information

Date Listed	July 17th, 2025
Days on Market	11
Zoning	Zone 24
Condo Fee	\$175

DATA IS DEEMED RELIABLE BUT IS NOT GUARANTEED ACCURATE BY THE REALTORS® ASSOCIATION OF EDMONTON. COPYRIGHT 2025 BY THE REALTORS® ASSOCIATION OF EDMONTON. ALL RIGHTS RESERVED. Trademarks are owned or controlled by the Canadian Real Estate Association (CREA) and identify real estate professionals who are members of CREA (REALTOR®, REALTORS®) and/or the quality of services they provide (MLS®, Multiple Listing Service®)

Listing information last updated on July 28th, 2025 at 12:03pm MDT