

\$450,000 - 857 Chappelle Link, Edmonton

MLS® #E4448654

\$450,000

3 Bedroom, 2.50 Bathroom, 1,421 sqft

Single Family on 0.00 Acres

Chappelle Area, Edmonton, AB

Imagine starting your mornings with coffee on the front veranda, overlooking the quiet green space just across the street. This former showhome blends warmth, style, & comfort in one of the area's most sought-after neighbourhoods. Step inside to soaring 9'™ ceilings, rich hardwood floors, & sunlight pouring through oversized windows. The open-concept layout is perfect for hosting from the stylish espresso kitchen with ss appliances & eating bar, to the cozy dining area that flows right into the welcoming living room. Upstairs, retreat to your spacious primary suite with double closets & a private ensuite. Two more bright bedrooms & a full bath offer plenty of room for the kids, guests, or a home office setup. The unfinished basement gives you the freedom to create your dream space media room, gym, or extra storage. And with a fully fenced yard, large deck, & a double garage, outdoor living is just as turnkey. Whether you're chasing kids around the park or relaxing at home, this property delivers!

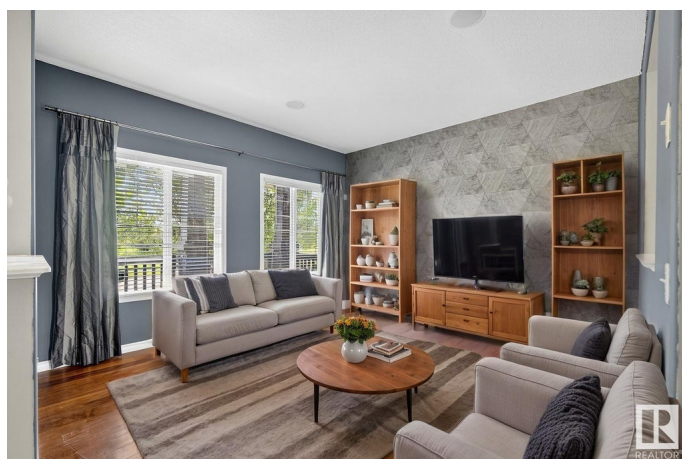
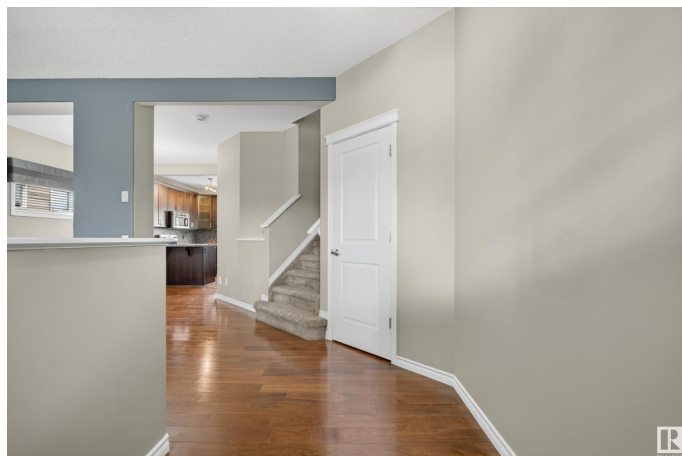
Built in 2012

Essential Information

MLS® # E4448654

Price \$450,000

Bedrooms 3



Bathrooms	2.50
Full Baths	2
Half Baths	1
Square Footage	1,421
Acres	0.00
Year Built	2012
Type	Single Family
Sub-Type	Detached Single Family
Style	2 Storey
Status	Active

Community Information

Address	857 Chappelle Link
Area	Edmonton
Subdivision	Chappelle Area
City	Edmonton
County	ALBERTA
Province	AB
Postal Code	T6W 2N4

Amenities

Amenities	See Remarks
Parking	Double Garage Detached

Interior

Interior Features	ensuite bathroom
Appliances	Air Conditioning-Central, Dishwasher-Built-In, Dryer, Garage Control, Garage Opener, Refrigerator, Stove-Electric, Washer, Window Coverings
Heating	Forced Air-1, Natural Gas
Stories	2
Has Basement	Yes
Basement	Full, Unfinished

Exterior

Exterior	Wood, Stone, Vinyl
Exterior Features	Back Lane, Golf Nearby, Playground Nearby, Public Swimming Pool, Public Transportation, Schools, Shopping Nearby
Roof	Asphalt Shingles

Construction	Wood, Stone, Vinyl
Foundation	Concrete Perimeter

Additional Information

Date Listed	July 18th, 2025
Days on Market	1
Zoning	Zone 55

DATA IS DEEMED RELIABLE BUT IS NOT GUARANTEED ACCURATE BY THE REALTORS® ASSOCIATION OF EDMONTON. COPYRIGHT 2025 BY THE REALTORS® ASSOCIATION OF EDMONTON. ALL RIGHTS RESERVED.Trademarks are owned or controlled by the Canadian Real Estate Association (CREA) and identify real estate professionals who are members of CREA (REALTOR®, REALTORS®) and/or the quality of services they provide (MLS®, Multiple Listing Service®)

Listing information last updated on July 19th, 2025 at 6:47am MDT