

\$759,800 - 20010 128a Avenue, Edmonton

MLS® #E4449265

\$759,800

3 Bedroom, 4.00 Bathroom, 3,079 sqft

Single Family on 0.00 Acres

Trumpeter Area, Edmonton, AB

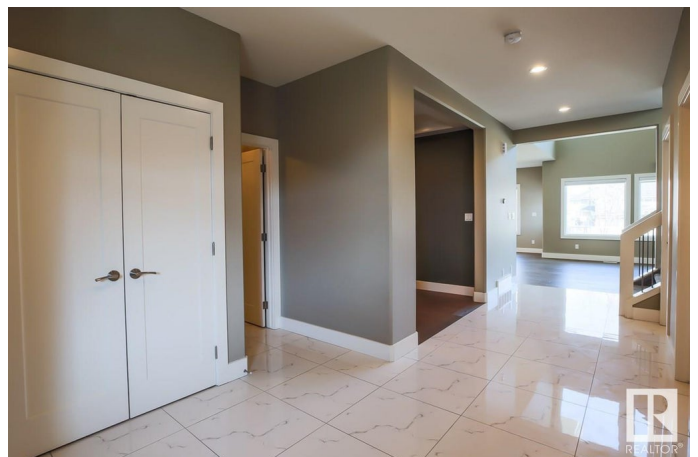
Discover Refined Living in Trumpeter by Big Lake - Former Blackstone Show home! Nestled in Edmonton's tranquil NW, this exceptional former Show home offers 4 full bathrooms, and an oversized triple-attached garage. Every turn in this 2-storey residence reflects superior craftsmanship and high-end design. Home Highlights: Exotic granite throughout, Custom 24" x 24" marble-inspired tile flooring, Custom cabinetry and enormous walk-through panty, 18' soaring ceilings with floor-to-ceiling windows, curated window treatments, and coffered ceilings, Feature-wall fireplace adorned with full-height tile, Spa-style primary ensuite with jacuzzi tub and glass enclosed shower, Large mudroom featuring locker cubbies and built-in shoe storage. Upstairs laundry room complete with sink, unspoiled Basement with 9' ceilings-great expansion potential, Elegant stair railings, bespoke light fixtures, and Hardie Plank Exterior. This home must be seen in person to truly appreciate the thoughtful upgrades and design integrity!

Built in 2015

Essential Information

MLS® # E4449265

Price \$759,800



Bedrooms	3
Bathrooms	4.00
Full Baths	4
Square Footage	3,079
Acres	0.00
Year Built	2015
Type	Single Family
Sub-Type	Detached Single Family
Style	2 Storey
Status	Active

Community Information

Address	20010 128a Avenue
Area	Edmonton
Subdivision	Trumpeter Area
City	Edmonton
County	ALBERTA
Province	AB
Postal Code	T5S 0E6

Amenities

Amenities	No Animal Home, No Smoking Home
Parking	Triple Garage Attached

Interior

Interior Features	ensuite bathroom
Appliances	Dishwasher-Built-In, Dryer, Freezer, Hood Fan, Oven-Built-In, Oven-Microwave, Stove-Countertop Gas, Washer, Window Coverings
Heating	Forced Air-1, Natural Gas
Fireplace	Yes
Fireplaces	Glass Door
Stories	2
Has Basement	Yes
Basement	Full, Unfinished

Exterior

Exterior	Wood, Fiber Cement, Stone
Exterior Features	Golf Nearby, Park/Reserve, Public Transportation
Roof	Asphalt Shingles

Construction	Wood, Fiber Cement, Stone
Foundation	Concrete Perimeter

Additional Information

Date Listed	July 23rd, 2025
Days on Market	5
Zoning	Zone 59

DATA IS DEEMED RELIABLE BUT IS NOT GUARANTEED ACCURATE BY THE REALTORS® ASSOCIATION OF EDMONTON. COPYRIGHT 2025 BY THE REALTORS® ASSOCIATION OF EDMONTON. ALL RIGHTS RESERVED.Trademarks are owned or controlled by the Canadian Real Estate Association (CREA) and identify real estate professionals who are members of CREA (REALTOR®, REALTORS®) and/or the quality of services they provide (MLS®, Multiple Listing Service®)

Listing information last updated on July 28th, 2025 at 1:32pm MDT