

\$355,000 - 13 2121 Haddow Drive, Edmonton

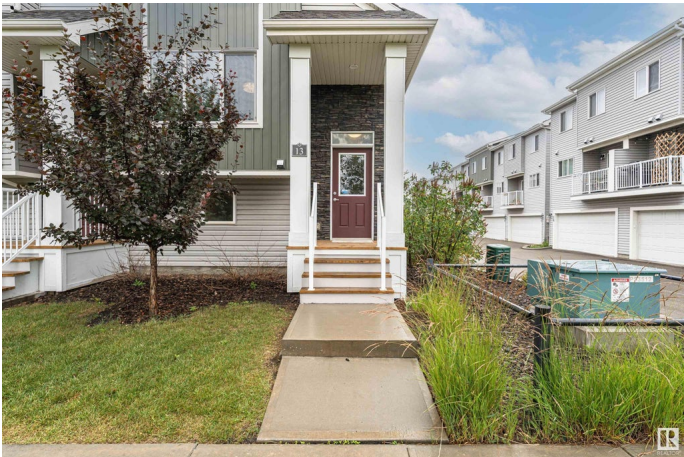
MLS® #E4449585

\$355,000

3 Bedroom, 2.50 Bathroom, 1,290 sqft
Condo / Townhouse on 0.00 Acres

Haddow, Edmonton, AB

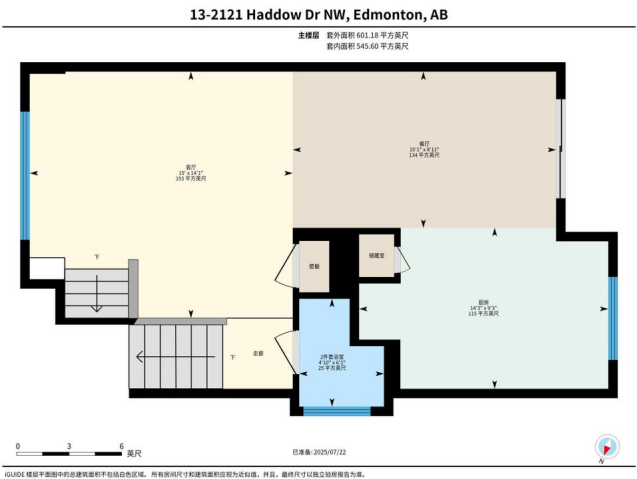
Welcome to this Beautiful two-storey townhome in Haddow Landing. This gorgeous 1289 sqft townhome features 3 beds, 2.5bath and double attached garage. South-facing living room features a large bright window & a formal dining room. Spacious kitchen with granite countertops, an eating bar, and stainless-steel appliances. A 2-pc bath completes the main floor. Upstairs offers a large master bedroom with 4pc ensuite bath and 2 good-sized bedrooms. A 4pc main bath completes the upper level. On the lower level, you will find the laundry room, furnace room, and access to the double attached garage. This townhome is perfectly located only minutes away from the Windermere Shops, near Anthony Henday Drive, and only five minutes from Whitemud Drive.



Built in 2017

Essential Information

MLS® #	E4449585
Price	\$355,000
Bedrooms	3
Bathrooms	2.50
Full Baths	2
Half Baths	1
Square Footage	1,290
Acres	0.00



Year Built	2017
Type	Condo / Townhouse
Sub-Type	Townhouse
Style	2 Storey
Status	Active

Community Information

Address	13 2121 Haddow Drive
Area	Edmonton
Subdivision	Haddow
City	Edmonton
County	ALBERTA
Province	AB
Postal Code	T6R 0W6

Amenities

Amenities	Detectors Smoke, Parking-Visitor
Parking	Double Garage Attached

Interior

Interior Features	ensuite bathroom
Appliances	Dishwasher-Built-In, Hood Fan, Refrigerator, Stacked Washer/Dryer, Stove-Electric, Window Coverings
Heating	Forced Air-1, Natural Gas
Stories	3
Has Basement	Yes
Basement	Full, Finished

Exterior

Exterior	Wood, Stone, Vinyl
Exterior Features	Landscaped, Park/Reserve, Playground Nearby, Public Transportation, Schools, Shopping Nearby
Roof	Asphalt Shingles
Construction	Wood, Stone, Vinyl
Foundation	Concrete Perimeter

Additional Information

Date Listed	July 24th, 2025
Days on Market	52

Zoning	Zone 14
Condo Fee	\$316

DATA IS DEEMED RELIABLE BUT IS NOT GUARANTEED ACCURATE BY THE REALTORS® ASSOCIATION OF EDMONTON. COPYRIGHT 2025 BY THE REALTORS® ASSOCIATION OF EDMONTON. ALL RIGHTS RESERVED. Trademarks are owned or controlled by the Canadian Real Estate Association (CREA) and identify real estate professionals who are members of CREA (REALTOR®, REALTORS®) and/or the quality of services they provide (MLS®, Multiple Listing Service®)

Listing information last updated on September 14th, 2025 at 5:02am MDT