

\$297,000 - 129 219 Charlotte Way, Sherwood Park

MLS® #E4449686

\$297,000

3 Bedroom, 2.50 Bathroom, 1,133 sqft
Condo / Townhouse on 0.00 Acres

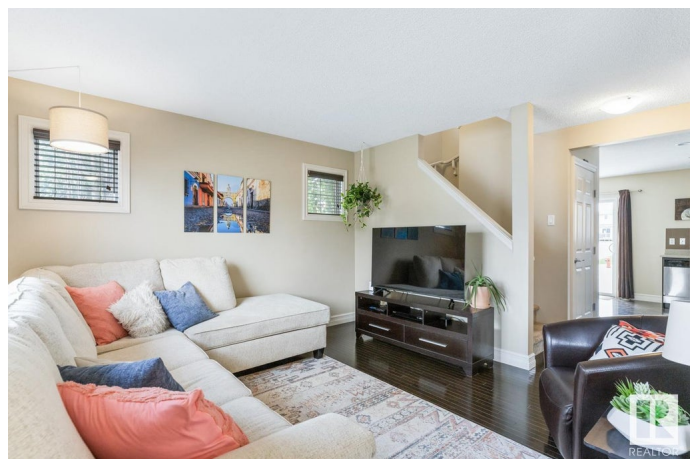
Lakeland Ridge, Sherwood Park, AB

Welcome to easy living in the sought after Neighbourhood of Lakeland Ridge! This air conditioned 3 bedroom, 2.5 bath home offers a very low-maintenance lifestyle in family-friendly complex with incredibly low condo fees including lawn maintenance. The main floor features beautiful hardwood, stainless steel appliances, and a bright open layout that flows to a private back deck perfect for your BBQ. The insulated and drywalled basement provides a flexible space for a home gym, office, or playroom. Enjoy modern upgrades like a high efficiency furnace and water on demand. With 2 assigned parking stalls, this home is close to schools, parks, trails, and a community garden, and lots of amenities. Perfect for families or anyone looking to enjoy comfort and convenience in a great location!

Built in 2012

Essential Information

MLS® #	E4449686
Price	\$297,000
Bedrooms	3
Bathrooms	2.50
Full Baths	2
Half Baths	1
Square Footage	1,133



Acres	0.00
Year Built	2012
Type	Condo / Townhouse
Sub-Type	Townhouse
Style	2 Storey
Status	Active

Community Information

Address	129 219 Charlotte Way
Area	Sherwood Park
Subdivision	Lakeland Ridge
City	Sherwood Park
County	ALBERTA
Province	AB
Postal Code	T8H 0T3

Amenities

Amenities	Air Conditioner, Deck, Front Porch, Hot Water Instant
Parking	2 Outdoor Stalls

Interior

Interior Features	ensuite bathroom
Appliances	Air Conditioning-Central, Dishwasher-Built-In, Dryer, Microwave Hood Fan, Refrigerator, Stove-Electric, Washer, Window Coverings
Heating	Forced Air-1, Natural Gas
Stories	2
Has Basement	Yes
Basement	Full, Partially Finished

Exterior

Exterior	Wood, Vinyl
Exterior Features	Low Maintenance Landscape, Playground Nearby, Schools, Shopping Nearby
Roof	Asphalt Shingles
Construction	Wood, Vinyl
Foundation	Concrete Perimeter

Additional Information

Date Listed	July 25th, 2025
-------------	-----------------

Days on Market	2
Zoning	Zone 25
Condo Fee	\$227

DATA IS DEEMED RELIABLE BUT IS NOT GUARANTEED ACCURATE BY THE REALTORS® ASSOCIATION OF EDMONTON. COPYRIGHT 2025 BY THE REALTORS® ASSOCIATION OF EDMONTON. ALL RIGHTS RESERVED.Trademarks are owned or controlled by the Canadian Real Estate Association (CREA) and identify real estate professionals who are members of CREA (REALTOR®, REALTORS®) and/or the quality of services they provide (MLS®, Multiple Listing Service®)

Listing information last updated on July 27th, 2025 at 7:02pm MDT