

\$99,800 - 202 10835 114 Street, Edmonton

MLS® #E4449865

\$99,800

2 Bedroom, 1.00 Bathroom, 1,003 sqft

Condo / Townhouse on 0.00 Acres

Queen Mary Park, Edmonton, AB

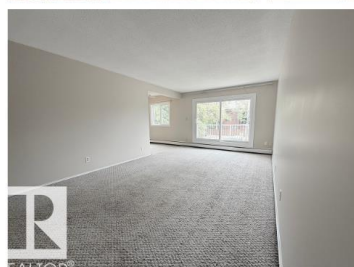
INVESTOR & FIRST TIME BUYER ALERT!

Located just a few blocks north of downtown, this 2 bdrm condo offers an excellent opportunity for investors looking to grow their portfolio. Vacant now, previous Tenant was paying - \$1175! The spacious layout includes two comfortable bdrms, a full bath, and a cozy living space that leads to a private balconyâ€”perfect for relaxing or enjoying your morning coffee. An assigned parking stall is included for added convenience. With easy access to shopping, amenities, Brewery District, 124th St & Grant MacEwan, this condo is ideally situated for those seeking convenience & connectivity. Whether you're looking to add to your investment portfolio or start your journey in real estate! Donâ€™t miss out! Note- pictures have had tenants items removed via a.i.

Built in 1971

Essential Information

MLS® #	E4449865
Price	\$99,800
Bedrooms	2
Bathrooms	1.00
Full Baths	1
Square Footage	1,003
Acres	0.00



Year Built	1971
Type	Condo / Townhouse
Sub-Type	Lowrise Apartment
Style	Single Level Apartment
Status	Active

Community Information

Address	202 10835 114 Street
Area	Edmonton
Subdivision	Queen Mary Park
City	Edmonton
County	ALBERTA
Province	AB
Postal Code	T5H 3K3

Amenities

Amenities	Rental Pool Option
Parking Spaces	1
Parking	Stall

Interior

Appliances	Refrigerator, Stove-Electric
Heating	Baseboard, Natural Gas
# of Stories	3
Stories	3
Has Basement	Yes
Basement	None, No Basement

Exterior

Exterior	Wood, Brick, See Remarks
Exterior Features	Playground Nearby, Public Transportation, Schools, Shopping Nearby
Roof	Tar & Gravel
Construction	Wood, Brick, See Remarks
Foundation	Concrete Perimeter

Additional Information

Date Listed	July 24th, 2025
Days on Market	51
Zoning	Zone 08

Condo Fee \$566

DATA IS DEEMED RELIABLE BUT IS NOT GUARANTEED ACCURATE BY THE REALTORS® ASSOCIATION OF EDMONTON. COPYRIGHT 2025 BY THE REALTORS® ASSOCIATION OF EDMONTON. ALL RIGHTS RESERVED.Trademarks are owned or controlled by the Canadian Real Estate Association (CREA) and identify real estate professionals who are members of CREA (REALTOR®, REALTORS®) and/or the quality of services they provide (MLS®, Multiple Listing Service®)

Listing information last updated on September 13th, 2025 at 2:17am MDT