

\$389,900 - 206 5029 Edgemont Boulevard, Edmonton

MLS® #E4450358

\$389,900

2 Bedroom, 2.00 Bathroom, 1,064 sqft

Condo / Townhouse on 0.00 Acres

Edgemont (Edmonton), Edmonton, AB

Luxury Ravine-Side Living | Corner Unit with Premium Upgrades & Exceptional Storage. Welcome to this well maintained, corner unit nestled alongside a picturesque ravine offering the perfect blend of tranquility and style.

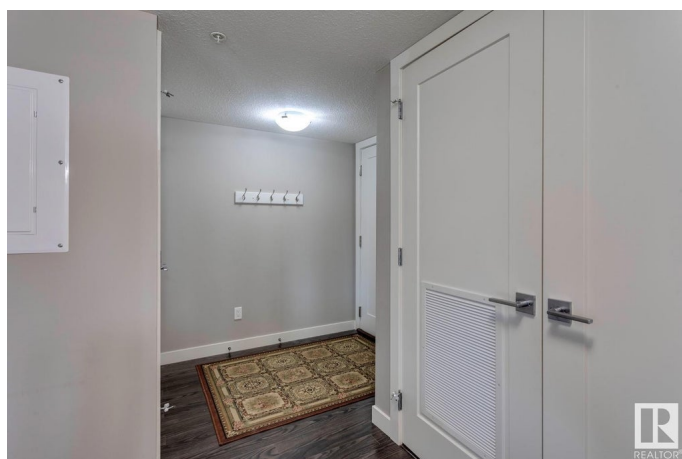
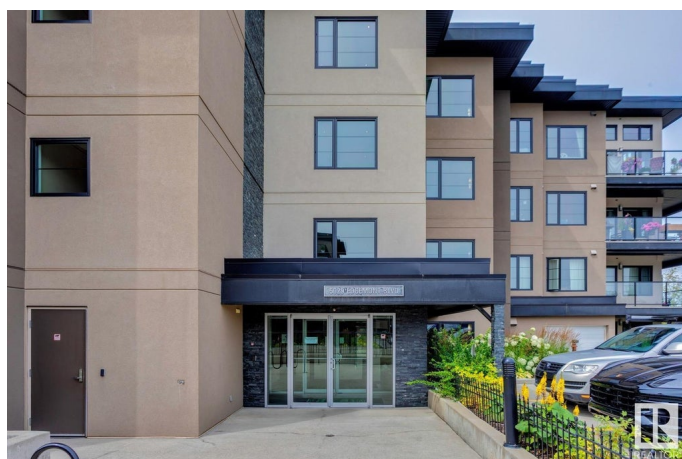
Boasting 2 spacious bedrooms and 2 bathrooms, this sun-drenched unit is adorned with high-end finishes throughout. The open-concept floor plan highlights a generously sized living room framed by large windows that flood the space with natural light. The beautiful kitchen features sleek quartz countertops, stainless steel appliances, and ample cabinetry—ideal for both entertaining and everyday living. You'll also enjoy the added convenience of in-suite laundry and a wraparound balcony with gas BBQ hookup, perfect for outdoor dining. Storage will never be an issue with 2 underground parking stalls with secure storage cage and 2 additional titled storage units a rare and valuable feature. Just steps away from scenic walking trails and quick access to all amenities. This is a must see!

Built in 2014

Essential Information

MLS® # E4450358

Price \$389,900



Bedrooms	2
Bathrooms	2.00
Full Baths	2
Square Footage	1,064
Acres	0.00
Year Built	2014
Type	Condo / Townhouse
Sub-Type	Lowrise Apartment
Style	Single Level Apartment
Status	Active

Community Information

Address	206 5029 Edgemont Boulevard
Area	Edmonton
Subdivision	Edgemont (Edmonton)
City	Edmonton
County	ALBERTA
Province	AB
Postal Code	T6M 0S8

Amenities

Amenities	Closet Organizers, Secured Parking, Security Door, Storage-Locker Room, Storage Cage
Parking Spaces	2
Parking	Underground

Interior

Interior Features	ensuite bathroom
Appliances	Dishwasher-Built-In, Dryer, Microwave Hood Fan, Refrigerator, Stove-Electric, Washer, Window Coverings
Heating	Fan Coil, Natural Gas
# of Stories	4
Stories	1
Has Basement	Yes
Basement	None, No Basement

Exterior

Exterior	Wood, Brick, Stucco
Exterior Features	Backs Onto Park/Trees, Park/Reserve, Playground Nearby, Public

	Transportation, Schools, Shopping Nearby
Roof	EPDM Membrane
Construction	Wood, Brick, Stucco
Foundation	Concrete Perimeter

School Information

Elementary	Parkland Immanuel
Middle	Riverbend Junior High
High	Lillian Osborne High

Additional Information

Date Listed	July 30th, 2025
Days on Market	2
Zoning	Zone 57
HOA Fees	87.17
HOA Fees Freq.	Annually
Condo Fee	\$781

DATA IS DEEMED RELIABLE BUT IS NOT GUARANTEED ACCURATE BY THE REALTORS® ASSOCIATION OF EDMONTON. COPYRIGHT 2025 BY THE REALTORS® ASSOCIATION OF EDMONTON. ALL RIGHTS RESERVED. Trademarks are owned or controlled by the Canadian Real Estate Association (CREA) and identify real estate professionals who are members of CREA (REALTOR®, REALTORS®) and/or the quality of services they provide (MLS®, Multiple Listing Service®)

Listing information last updated on August 1st, 2025 at 1:18pm MDT