

\$225,000 - #2 55209 Rr 35, Rural Lac Ste. Anne County

MLS® #E4451767

\$225,000

0 Bedroom, 0.00 Bathroom,
Rural on 40.00 Acres

None, Rural Lac Ste. Anne County, AB

AMAZING VALUE. Dream property one mile away from Lac St. Anne Lake. 40 acres mostly treed very private. Parcel already has a gate and driveway development. Great location close to highway 43 and Ross Haven. Build a cabin , build a house or make a recreational area. Close to the lake which has great all year round fishing.

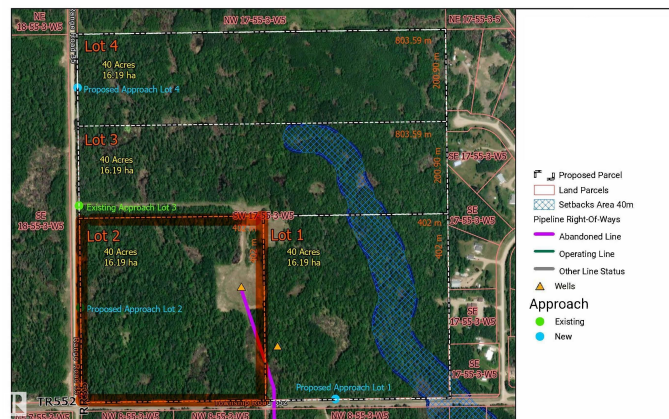
Essential Information

| | |
|-----------|-----------------|
| MLS® # | E4451767 |
| Price | \$225,000 |
| Bathrooms | 0.00 |
| Acres | 40.00 |
| Type | Rural |
| Sub-Type | Vacant Lot/Land |
| Status | Active |

Community Information

| | |
|-------------|----------------------------|
| Address | #2 55209 Rr 35 |
| Area | Rural Lac Ste. Anne County |
| Subdivision | None |
| City | Rural Lac Ste. Anne County |
| County | ALBERTA |
| Province | AB |
| Postal Code | T0E 1A0 |

Exterior



Exterior Features Boating, Private Setting, Treed Lot

Additional Information

Date Listed August 7th, 2025

Days on Market 5

Zoning Zone 70

DATA IS DEEMED RELIABLE BUT IS NOT GUARANTEED ACCURATE BY THE REALTORS® ASSOCIATION OF EDMONTON. COPYRIGHT 2025 BY THE REALTORS® ASSOCIATION OF EDMONTON. ALL RIGHTS RESERVED.Trademarks are owned or controlled by the Canadian Real Estate Association (CREA) and identify real estate professionals who are members of CREA (REALTOR®, REALTORS®) and/or the quality of services they provide (MLS®, Multiple Listing Service®)

Listing information last updated on August 12th, 2025 at 9:02pm MDT