

# \$3,000 - 3571 Cherry Landing Landing, Edmonton

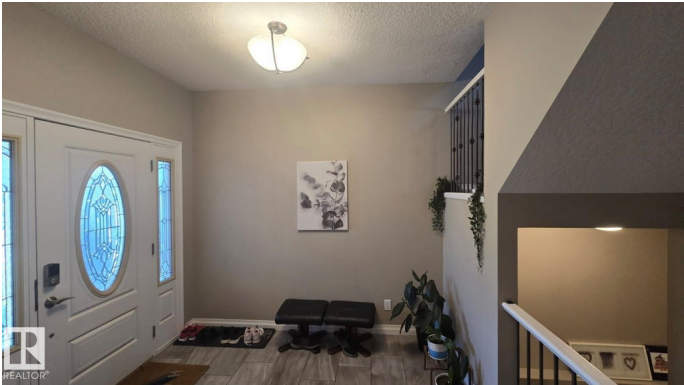
MLS® #E4452056

**\$3,000**

3 Bedroom, 2.50 Bathroom, 2,438 sqft  
Rental on 0.00 Acres

The Orchards At Ellerslie, Edmonton, AB

Welcome to The Orchards at Ellerslie, a vibrant and family friendly community offering comfort and convenience in a beautiful setting. This well maintained home features a double attached insulated garage, central air conditioning, paved road access, and a full unfinished basement providing great storage. Small trained pets are welcome, making it perfect for animal lovers. Enjoy nearby access to schools, parks, walking trails, and the exclusive Residents Association clubhouse with a splash park, skating rink, tennis courts, and more. All essential amenities including shopping centers, restaurants, grocery stores, medical clinics, and public transit are just minutes away. This is a fantastic opportunity to enjoy a well connected lifestyle in one of Edmonton’s most desirable neighborhoods.



Built in 2016

## Essential Information

MLS® #	E4452056
Price	\$3,000
Bedrooms	3
Bathrooms	2.50
Full Baths	2
Half Baths	1
Square Footage	2,438

Acres	0.00
Year Built	2016
Type	Rental
Style	2 Storey
Status	Active

### Community Information

Address	3571 Cherry Landing Landing
Area	Edmonton
Subdivision	The Orchards At Ellerslie
City	Edmonton
County	ALBERTA
Province	AB
Postal Code	T6X 2B5

### Amenities

Parking	Double Garage Attached, Insulated
---------	-----------------------------------

### Interior

Appliances	Air Conditioning-Central, Dishwasher-Built-In, Dryer, Microwave Hood Fan, Oven-Microwave, Refrigerator, Stove-Gas, Washer
------------	---

### Additional Information

Date Listed	August 8th, 2025
Days on Market	5
Zoning	Zone 53

DATA IS DEEMED RELIABLE BUT IS NOT GUARANTEED ACCURATE BY THE REALTORS® ASSOCIATION OF EDMONTON. COPYRIGHT 2025 BY THE REALTORS® ASSOCIATION OF EDMONTON. ALL RIGHTS RESERVED. Trademarks are owned or controlled by the Canadian Real Estate Association (CREA) and identify real estate professionals who are members of CREA (REALTOR®, REALTORS®) and/or the quality of services they provide (MLS®, Multiple Listing Service®)

Listing information last updated on August 13th, 2025 at 8:47am MDT