

\$178,000 - 403 164 Bridgeport Boulevard, Leduc

MLS® #E4452260

\$178,000

2 Bedroom, 1.00 Bathroom, 1,072 sqft

Condo / Townhouse on 0.00 Acres

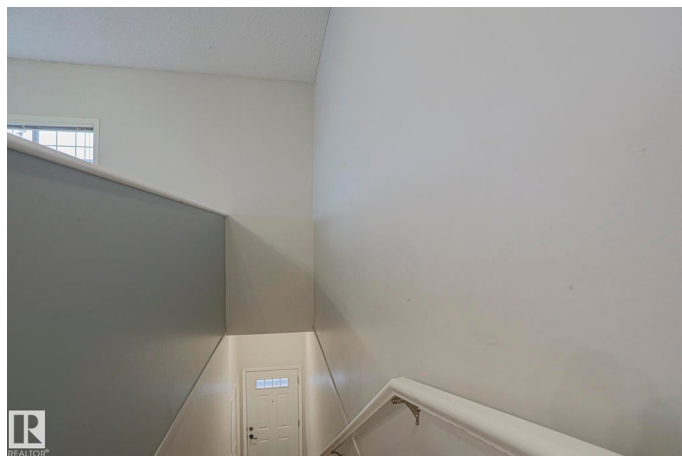
Bridgeport, Leduc, AB

Welcome to the Brooklands At Bridgeport in Leduc! This TOP FLOOR 2 bed, 1 bath carriage home has everything that you have been looking for. IN-SUITE LAUNDRY, 2 PARKING STALLS, PET FRIENDLY, WEST facing BALCONY & STORAGE. The main floor offers an open concept floor plan with laminate flooring, kitchen that includes pantry, eat-up bar and plenty of cabinet space. Both bedrooms are perfectly sized with master including a walk-in closet. Prime location close to Leduc Common with shopping, grocery store & restaurant's. Perfect opportunity to own your own home.

Built in 2007

Essential Information

| | |
|----------------|-------------------|
| MLS® # | E4452260 |
| Price | \$178,000 |
| Bedrooms | 2 |
| Bathrooms | 1.00 |
| Full Baths | 1 |
| Square Footage | 1,072 |
| Acres | 0.00 |
| Year Built | 2007 |
| Type | Condo / Townhouse |
| Sub-Type | Carriage |
| Style | Bungalow |



| | |
|--------|--------|
| Status | Active |
|--------|--------|

Community Information

| | |
|-------------|------------------------------|
| Address | 403 164 Bridgeport Boulevard |
| Area | Leduc |
| Subdivision | Bridgeport |
| City | Leduc |
| County | ALBERTA |
| Province | AB |
| Postal Code | T9E 0L3 |

Amenities

| | |
|----------------|-------------------------------------------------------|
| Amenities | Off Street Parking, Parking-Visitor, Storage-In-Suite |
| Parking Spaces | 2 |
| Parking | 2 Outdoor Stalls |

Interior

| | |
|--------------|-------------------------------------------------------------------------|
| Appliances | Dishwasher-Built-In, Refrigerator, Stacked Washer/Dryer, Stove-Electric |
| Heating | Forced Air-1, Natural Gas |
| Stories | 1 |
| Has Basement | Yes |
| Basement | None, No Basement |

Exterior

| | |
|-------------------|---------------------------------------------------------------------|
| Exterior | Wood, Vinyl |
| Exterior Features | Airport Nearby, Golf Nearby, Public Transportation, Shopping Nearby |
| Roof | Asphalt Shingles |
| Construction | Wood, Vinyl |
| Foundation | Concrete Perimeter |

Additional Information

| | |
|----------------|------------------|
| Date Listed | August 9th, 2025 |
| Days on Market | 2 |
| Zoning | Zone 81 |
| Condo Fee | \$326 |

DATA IS DEEMED RELIABLE BUT IS NOT GUARANTEED ACCURATE BY THE REALTORS® ASSOCIATION OF EDMONTON. COPYRIGHT 2025 BY THE REALTORS® ASSOCIATION OF EDMONTON. ALL RIGHTS RESERVED. Trademarks are owned or controlled by the Canadian Real Estate Association (CREA) and identify real estate professionals who are members of CREA (REALTOR®, REALTORS®) and/or the quality of services they provide (MLS®, Multiple Listing Service®)

Listing information last updated on August 11th, 2025 at 6:02pm MDT