

\$350,000 - 11 903 Rutherford Road, Edmonton

MLS® #E4452273

\$350,000

2 Bedroom, 2.50 Bathroom, 1,683 sqft

Condo / Townhouse on 0.00 Acres

Rutherford (Edmonton), Edmonton, AB

Executive townhome with two primary suites! Whether you are a first-time buyer, a professional couple, have a teenager who wants their own space, or just want a non-generic townhome, this property is for you! Your 1,683 sq.ft. CORNER unit has you entering through the double attached garage. The partial basement is fully finished and can be a third bedroom, office, or second living room. The main floor is very spacious with a great layout that showcases a large living room, dining area, and kitchen with tons of counter and cabinet space. The upper level has the huge primary bedroom with walk-in closet and full bathroom. The second suite is also well adorned with the same features. Outside you have a good-sized deck that faces a green space so that your view is more appealing than just looking at a parking lot or other units. Located close to the Henday, South Common, and many parks, schools, and more, this is an ideal property for you to consider.

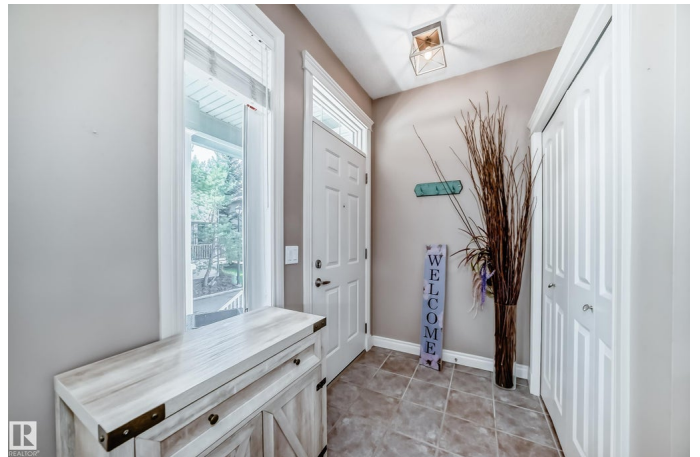
Built in 2003

Essential Information

MLS® # E4452273

Price \$350,000

Bedrooms 2



Bathrooms	2.50
Full Baths	2
Half Baths	1
Square Footage	1,683
Acres	0.00
Year Built	2003
Type	Condo / Townhouse
Sub-Type	Townhouse
Style	2 Storey
Status	Active

Community Information

Address	11 903 Rutherford Road
Area	Edmonton
Subdivision	Rutherford (Edmonton)
City	Edmonton
County	ALBERTA
Province	AB
Postal Code	T6W 1N9

Amenities

Amenities	Ceiling 9 ft., Deck, Detectors Smoke, Exterior Walls- 2"x6", Parking-Visitor, Smart/Program. Thermostat, Vinyl Windows, Vacuum System-Roughed-In
Parking Spaces	4
Parking	Double Garage Attached, Over Sized
Is Waterfront	Yes

Interior

Interior Features	ensuite bathroom
Appliances	Air Conditioning-Central, Dishwasher-Built-In, Dryer, Hood Fan, Refrigerator, Stove-Electric, Washer, Window Coverings
Heating	Forced Air-1, Natural Gas
Stories	3
Has Basement	Yes
Basement	Partial, Finished

Exterior

Exterior	Wood, Vinyl
----------	-------------

Exterior Features	Golf Nearby, Playground Nearby, Public Swimming Pool, Public Transportation, Schools, Shopping Nearby, Stream/Pond, View Lake
Roof	Asphalt Shingles
Construction	Wood, Vinyl
Foundation	Concrete Perimeter

Additional Information

Date Listed	August 10th, 2025
Days on Market	1
Zoning	Zone 55
Condo Fee	\$413

DATA IS DEEMED RELIABLE BUT IS NOT GUARANTEED ACCURATE BY THE REALTORS® ASSOCIATION OF EDMONTON. COPYRIGHT 2025 BY THE REALTORS® ASSOCIATION OF EDMONTON. ALL RIGHTS RESERVED. Trademarks are owned or controlled by the Canadian Real Estate Association (CREA) and identify real estate professionals who are members of CREA (REALTOR®, REALTORS®) and/or the quality of services they provide (MLS®, Multiple Listing Service®)

Listing information last updated on August 11th, 2025 at 12:02pm MDT