

\$1,099,000 - 43 26323 Twp Road 532 A, Rural Parkland County

MLS® #E4452297

\$1,099,000

4 Bedroom, 4.00 Bathroom, 2,293 sqft

Rural on 1.15 Acres

Royal Spring Estates, Rural Parkland County,
AB

Custom build home. Owner used all the best material, all the professional tradespeople, and did not spare the expense. If you are looking for a well built home this is the one. It offers too many things to name here.

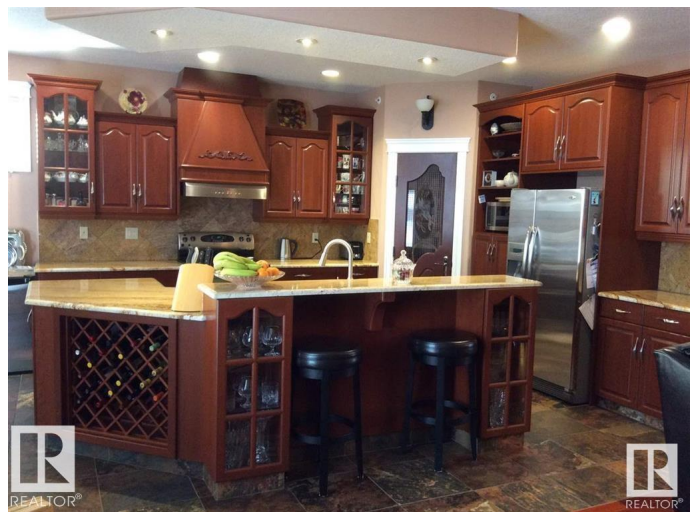
Built in 2007

Essential Information

MLS® #	E4452297
Price	\$1,099,000
Bedrooms	4
Bathrooms	4.00
Full Baths	4
Square Footage	2,293
Acres	1.15
Year Built	2007
Type	Rural
Sub-Type	Detached Single Family
Style	Bungalow
Status	Active

Community Information

Address	43 26323 Twp Road 532 A
Area	Rural Parkland County
Subdivision	Royal Spring Estates



City	Rural Parkland County
County	ALBERTA
Province	AB
Postal Code	T7X 4M1

Amenities

Features	On Street Parking, Ceiling 9 ft., Deck, Detectors Smoke, Fire Pit, Front Porch, No Smoking Home, Parking-Extra, Wet Bar, Workshop, See Remarks, Exterior Walls 2"x8", Natural Gas BBQ Hookup, 9 ft. Basement Ceiling
----------	--

Interior

Interior Features	ensuite bathroom
Heating	Forced Air-2, Natural Gas
Stories	2
Has Basement	Yes
Basement	See Remarks

Exterior

Exterior	Wood
Exterior Features	Corner Lot, Golf Nearby, Landscaped, See Remarks
Construction	Wood
Foundation	Concrete Perimeter

Additional Information

Date Listed	August 8th, 2025
Days on Market	7
Zoning	Zone 70

DATA IS DEEMED RELIABLE BUT IS NOT GUARANTEED ACCURATE BY THE REALTORS® ASSOCIATION OF EDMONTON. COPYRIGHT 2025 BY THE REALTORS® ASSOCIATION OF EDMONTON. ALL RIGHTS RESERVED. Trademarks are owned or controlled by the Canadian Real Estate Association (CREA) and identify real estate professionals who are members of CREA (REALTOR®, REALTORS®) and/or the quality of services they provide (MLS®, Multiple Listing Service®)

Listing information last updated on August 15th, 2025 at 6:17am MDT