

Courtesy Of Sarah J Leib Of RE/MAX River City

\$339,800 - 78 4050 Savaryn Drive, Edmonton

MLS® #E4452316

\$339,800

3 Bedroom, 2.50 Bathroom, 1,244 sqft
Condo / Townhouse on 0.00 Acres

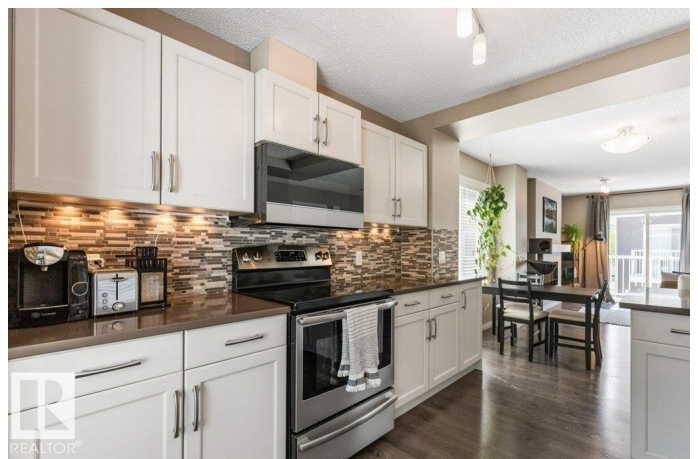
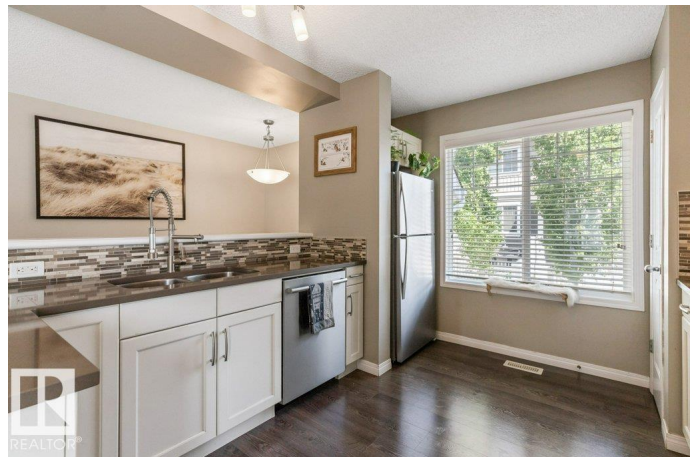
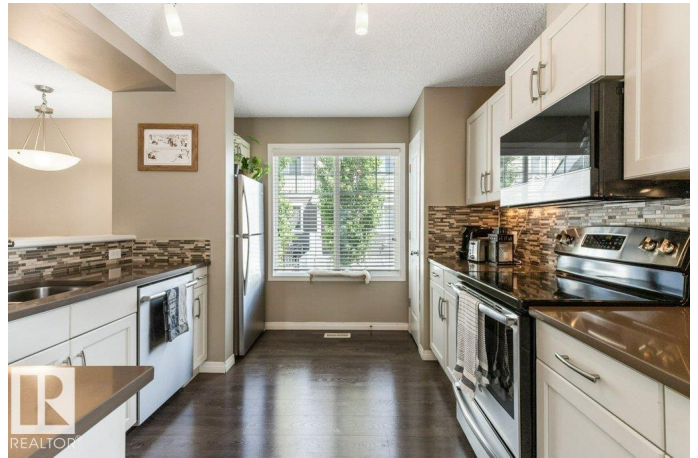
Summerside, Edmonton, AB

STUNNING SUMMERSIDE!Â Spacious END UNIT w/ 3 Bdrms & 3 Baths now available!Â Kitchen features QUARTZ COUNTERTOPS, WHITE CABINETRY, tile backsplash, breakfast bar & Stainless Steel Appliances. Main Floor is carpet-free & includes an ELECTRIC FIREPLACE. Upstairs, Primary Bdrm is complete w/ Walk-In Closet & 3-piece Ensuite. Two additional Bdrms & another full Bath are found on this level. Plenty of windows throughout make for a BRIGHT & SUNNY home. Ample, East facing FULLY FENCED YARD available to relax in plus a West facing Balcony. Property also boasts a DOUBLE, ATTACHED GARAGE. Bonus: Â Newer Dishwasher & Microwave Hood Fan (2023) and Hot Water Tank & Sump Pump (2024).Â Dining, Shopping & easy access to the Airport & Henday make for an ideal community. Lake Summerside is perfect for the outdoor enthusiast - enjoy access to the Beach Club with trails, courts (tennis, volleyball & basketball), picnic areas, skating, swimming, boating & fishing. DESIGNATED SCHOOLS: STREMBITSKY & MIREAU. PET FRIENDLY COMPLEX.

Built in 2013

Essential Information

MLS® # E4452316



Price	\$339,800
Bedrooms	3
Bathrooms	2.50
Full Baths	2
Half Baths	1
Square Footage	1,244
Acres	0.00
Year Built	2013
Type	Condo / Townhouse
Sub-Type	Townhouse
Style	2 Storey
Status	Active

Community Information

Address	78 4050 Savaryn Drive
Area	Edmonton
Subdivision	Summerside
City	Edmonton
County	ALBERTA
Province	AB
Postal Code	T6X 1R8

Amenities

Amenities	On Street Parking, Deck, Lake Privileges, No Smoking Home, Parking-Visitor, Patio
Parking	Double Garage Attached

Interior

Interior Features	ensuite bathroom
Appliances	Dishwasher-Built-In, Dryer, Garage Control, Garage Opener, Microwave Hood Fan, Refrigerator, Stove-Electric, Washer, Window Coverings, Garage Heater
Heating	Forced Air-1, Natural Gas
Fireplace	Yes
Fireplaces	Glass Door
Stories	2
Has Basement	Yes
Basement	Partial, Unfinished

Exterior

Exterior	Wood, Vinyl
Exterior Features	Airport Nearby, Beach Access, Corner Lot, Fenced, Lake Access Property, Landscaped, Park/Reserve, Playground Nearby, Public Transportation, Schools, Shopping Nearby
Roof	Asphalt Shingles
Construction	Wood, Vinyl
Foundation	Concrete Perimeter

School Information

Elementary	M Strembitsky/Divine Mercy
Middle	M Strembitsky/F M Mireau
High	J Percy Page/Holy Trinity

Additional Information

Date Listed	August 10th, 2025
Days on Market	1
Zoning	Zone 53
HOA Fees	443.71
HOA Fees Freq.	Annually
Condo Fee	\$281

DATA IS DEEMED RELIABLE BUT IS NOT GUARANTEED ACCURATE BY THE REALTORS® ASSOCIATION OF EDMONTON. COPYRIGHT 2025 BY THE REALTORS® ASSOCIATION OF EDMONTON. ALL RIGHTS RESERVED. Trademarks are owned or controlled by the Canadian Real Estate Association (CREA) and identify real estate professionals who are members of CREA (REALTOR®, REALTORS®) and/or the quality of services they provide (MLS®, Multiple Listing Service®)

Listing information last updated on August 11th, 2025 at 2:17pm MDT