

\$425,000 - 2 60431 Hwy 2, Rural Westlock County

MLS® #E4452625

\$425,000

2 Bedroom, 1.50 Bathroom, 983 sqft

Rural on 4.94 Acres

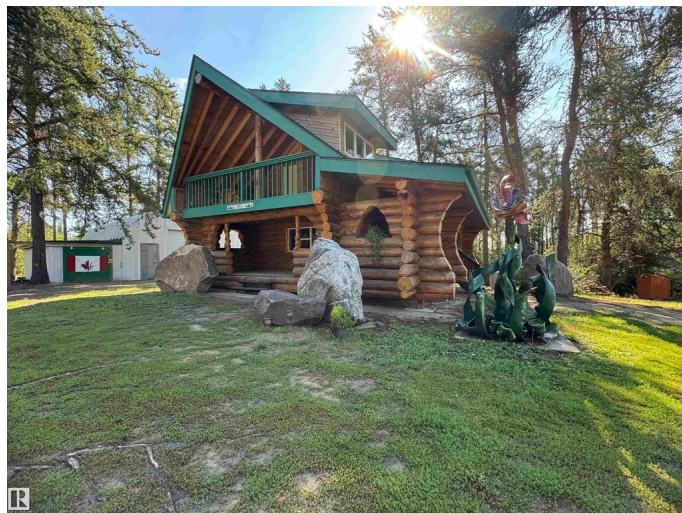
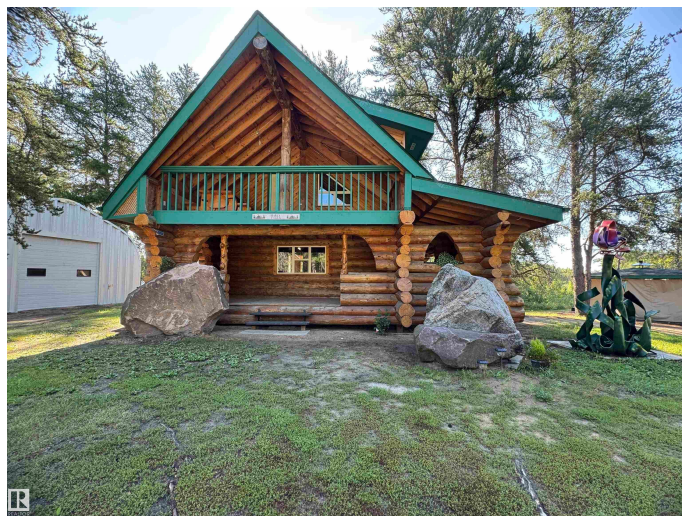
None, Rural Westlock County, AB

ONE-OF-A-KIND 4.94-acre retreat just off Hwy 2 near Nestowâ€”only 20 min to Westlock and 40 min to St. Albert! Finished in 2017 custom 2-storey log home with basement features a spiral staircase, covered deck, and balcony off the primary suite. Flexible layout offers potential for a 2nd bedroom on the main or lower level. Enjoy manicured water views with a dockâ€”perfect for kayakingâ€”and a powered guest cabin ready for your finishing touches. A huge concrete-floor gazebo with cupboards, power, and firepit exhaust makes entertaining easy. The heated, insulated 25 x 30 metal Quonset shop features a vehicle hoist, is wired for 220V, plumbed for in-floor heat, and includes a lean-to with concrete floor. Quiet, private, and teeming with wildlifeâ€”ideal as a full-time home or a weekend retreat!

Built in 2017

Essential Information

MLS® #	E4452625
Price	\$425,000
Bedrooms	2
Bathrooms	1.50
Full Baths	1
Half Baths	1
Square Footage	983



Acres	4.94
Year Built	2017
Type	Rural
Sub-Type	Detached Single Family
Style	2 Storey
Status	Active

Community Information

Address	2 60431 Hwy 2
Area	Rural Westlock County
Subdivision	None
City	Rural Westlock County
County	ALBERTA
Province	AB
Postal Code	T0G 1S0

Amenities

Features	Deck, Fire Pit, Gazebo, Hot Water Instant, No Animal Home, No Smoking Home, Vinyl Windows
----------	---

Interior

Interior Features	ensuite bathroom
Heating	In Floor Heat System, Wood Stove, Propane
Stories	2
Has Basement	Yes
Basement	Partial, Unfinished

Exterior

Exterior	Log
Exterior Features	Backs Onto Park/Trees, Private Setting, Recreation Use
Construction	Log
Foundation	Concrete Perimeter, See Remarks

Additional Information

Date Listed	August 12th, 2025
Days on Market	5
Zoning	Zone 70

DATA IS DEEMED RELIABLE BUT IS NOT GUARANTEED ACCURATE BY THE REALTORS® ASSOCIATION OF EDMONTON. COPYRIGHT 2025 BY THE REALTORS® ASSOCIATION OF EDMONTON. ALL RIGHTS RESERVED. Trademarks are owned or controlled by the Canadian Real Estate Association (CREA) and identify real

estate professionals who are members of CREA (REALTOR®®, REALTORS®®) and/or the quality of services they provide (MLS®®, Multiple Listing Service®®)

Listing information last updated on August 17th, 2025 at 1:32pm MDT