

## \$539,000 - 4616 111a Street, Edmonton

MLS® #E4452841

**\$539,000**

4 Bedroom, 2.50 Bathroom, 1,155 sqft

Single Family on 0.00 Acres

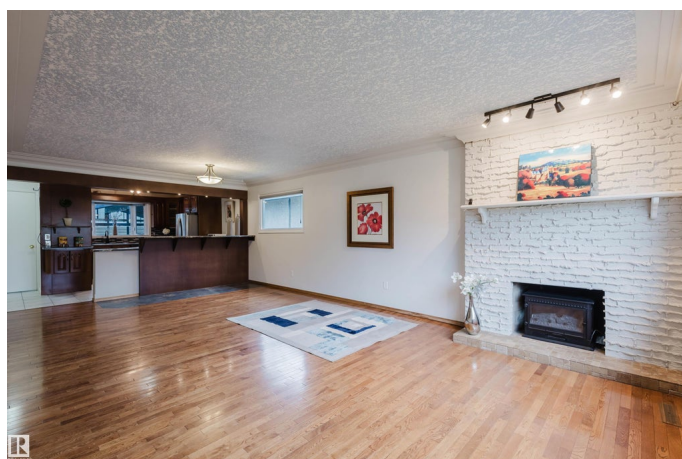
Malmo Plains, Edmonton, AB

This stunning 1,155 sqft bungalow on a spacious 50' x 120' lot combines modern upgrades with cozy charm in a prime location, featuring an open floor plan with elegant hardwood floors, crown molding, and a brick wood-burning fireplace (electric insert). The renovated kitchen boasts a raised eating bar, gas cooktop, and stainless steel fridge, while the main floor includes three bedrooms and an updated bathroom, all freshly painted for move-in readiness. The fully finished basement offers new flooring, a spacious rec/den, a fourth bedroom, and an additional full bath. Outside, enjoy a covered patio, newer deck with vinyl railing, newer vinyl fencing, and a double detached garage—all just steps from Southgate Centre, the LRT, and with easy Whitemud access!

Built in 1964

### Essential Information

MLS® #	E4452841
Price	\$539,000
Bedrooms	4
Bathrooms	2.50
Full Baths	2
Half Baths	1
Square Footage	1,155
Acres	0.00



Year Built	1964
Type	Single Family
Sub-Type	Detached Single Family
Style	Bungalow
Status	Active

### Community Information

Address	4616 111a Street
Area	Edmonton
Subdivision	Malmo Plains
City	Edmonton
County	ALBERTA
Province	AB
Postal Code	T6H 3G5

### Amenities

Amenities	Deck, Detectors Smoke, Patio, See Remarks
Parking	Double Garage Detached

### Interior

Interior Features	ensuite bathroom
Appliances	Dishwasher-Built-In, Dryer, Freezer, Garage Opener, Hood Fan, Oven-Built-In, Refrigerator, Stove-Countertop Gas, Vacuum System Attachments, Vacuum Systems, Washer, Window Coverings
Heating	Forced Air-1, Natural Gas
Stories	2
Has Basement	Yes
Basement	Full, Finished

### Exterior

Exterior	Wood, Stucco, Vinyl
Exterior Features	Fenced, Landscaped, Playground Nearby, Public Swimming Pool, Public Transportation, Schools, Shopping Nearby, See Remarks
Roof	Asphalt Shingles
Construction	Wood, Stucco, Vinyl
Foundation	Concrete Perimeter

### Additional Information

Date Listed	August 14th, 2025
Days on Market	2

## Zoning

## Zone 15

DATA IS DEEMED RELIABLE BUT IS NOT GUARANTEED ACCURATE BY THE REALTORS® ASSOCIATION OF EDMONTON. COPYRIGHT 2025 BY THE REALTORS® ASSOCIATION OF EDMONTON. ALL RIGHTS RESERVED. Trademarks are owned or controlled by the Canadian Real Estate Association (CREA) and identify real estate professionals who are members of CREA (REALTOR®, REALTORS®) and/or the quality of services they provide (MLS®, Multiple Listing Service®)

Listing information last updated on August 16th, 2025 at 4:47pm MDT