

\$125,000 - 629 53222 Range Road 272, Rural Parkland County

MLS® #E4452843

\$125,000

3 Bedroom, 2.00 Bathroom, 1,079 sqft
Land Lease Community on 0.00 Acres

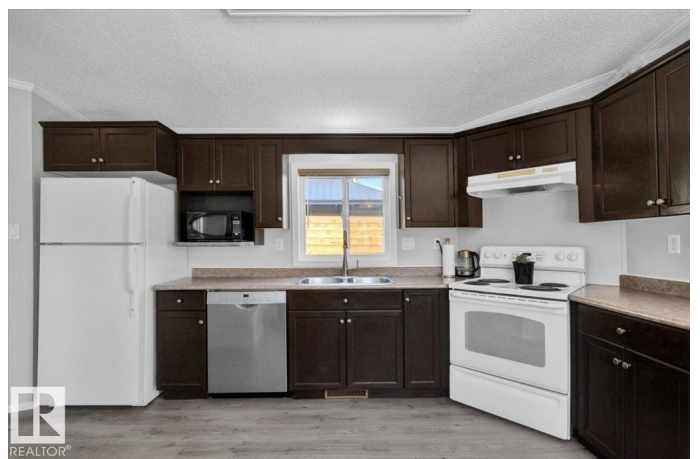
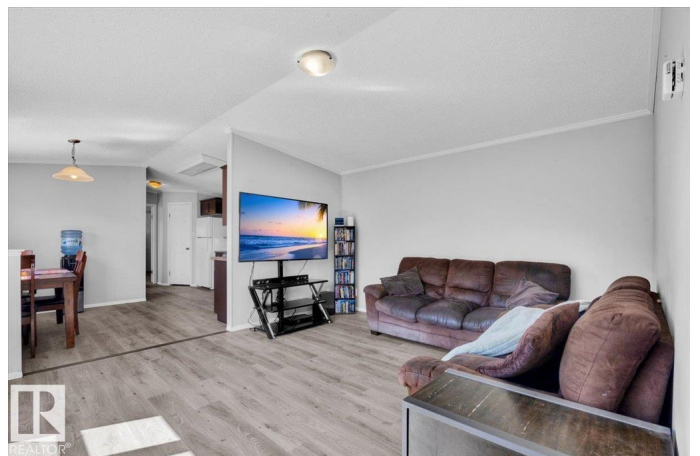
Parkland Village, Rural Parkland County, AB

The Dream of Home Ownership is about to become a reality for one incredibly lucky family! If you act quickly enough, this once-in-a-lifetime opportunity can be yours!!! Your days of Renting and nosey neighbours, on the other side of a thin wall, are over!! This inviting Home also backs onto green-space and is nestled in the clean, picturesque, quaint Community of Parkland Village. Enjoy the convenience of being just minutes from every amenity imaginable in Spruce Grove or 5 minutes to Yellowhead Trail. Just built in 2007, this lovely home has 2 outdoor stalls, 3 bedrooms and 2 full bathrooms. With vaulted ceilings; you will simply be amazed by how spacious this home feels throughout. Take pride in not only having your own Home, but a beautiful large yard to spend time with loved ones. Unlike renting, youâ€™ll never have to share laundry services; here youâ€™ll have your own! The Primary Bedroom boasts a full 4 piece En-suite AND a walk-in closet! This is truly as good as it gets; an affordable gem!

Built in 2007

Essential Information

MLS® #	E4452843
Price	\$125,000



Bedrooms	3
Bathrooms	2.00
Full Baths	2
Square Footage	1,079
Acres	0.00
Year Built	2007
Type	Land Lease Community
Sub-Type	Detached Single Family
Style	Bungalow
Status	Active

Community Information

Address	629 53222 Range Road 272
Area	Rural Parkland County
Subdivision	Parkland Village
City	Rural Parkland County
County	ALBERTA
Province	AB
Postal Code	T7X 3P7

Amenities

Parking	2 Outdoor Stalls, Parking Pad Cement/Paved
---------	--

Interior

Interior Features	ensuite bathroom
Appliances	Dishwasher-Built-In, Dryer, Hood Fan, Refrigerator, Stove-Electric, Washer, Window Coverings
Heating	Forced Air-1, Natural Gas

Exterior

Exterior	Prefab
Construction	Prefab
Foundation	Block

School Information

Elementary	Parkland Village School
------------	-------------------------

Additional Information

Date Listed	August 14th, 2025
Days on Market	7

Zoning

Zone 70

DATA IS DEEMED RELIABLE BUT IS NOT GUARANTEED ACCURATE BY THE REALTORS® ASSOCIATION OF EDMONTON. COPYRIGHT 2025 BY THE REALTORS® ASSOCIATION OF EDMONTON. ALL RIGHTS RESERVED. Trademarks are owned or controlled by the Canadian Real Estate Association (CREA) and identify real estate professionals who are members of CREA (REALTOR®, REALTORS®) and/or the quality of services they provide (MLS®, Multiple Listing Service®)

Listing information last updated on August 20th, 2025 at 10:03pm MDT