

# \$289,000 - 100 254053 Twp Road 460, Rural Wetaskiwin County

MLS® #E4452941

**\$289,000**

2 Bedroom, 1.00 Bathroom, 900 sqft

Rural on 0.51 Acres

Summerhaven, Rural Wetaskiwin County, AB

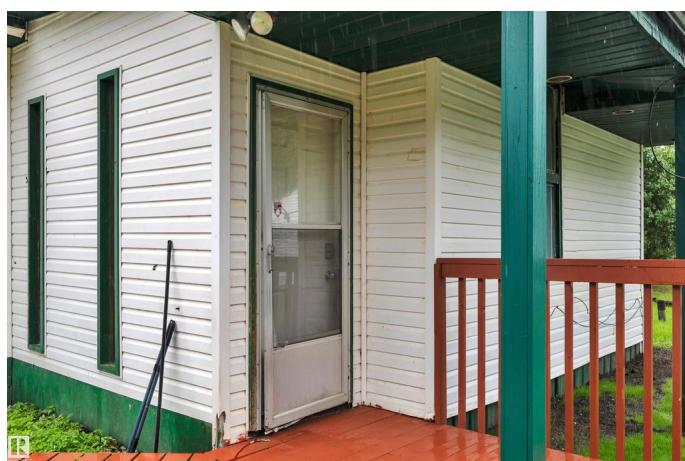
If your heart longs for nature, privacy, and the gentle stillness of the outdoors, this serene four season retreat could be your perfect match. Nestled on three mature, tree-filled lots just steps from the lake, youâ€™ll enjoy unmatched seclusion and a front-row seat to natureâ€™s beauty. Spend sunny afternoons in the shade of your gazebo, gather with friends around the firepit under the stars, or simply unwind on the freshly stained wrap-around deck. Inside, a welcoming mudroom leads to a cozy living area and a bright kitchen with a breakfast nook, where patio doors open to the deck space. Two comfortable bedrooms and a spacious 4-piece bath with laundry complete the home. The oversized, insulated double garage offers plenty of space for storage or hobby work, and both the house, garage and shed feature low-maintenance metal roofs. The drive to Wetaskiwin is only 15 min or head 5 min west to enjoy dinner and entertainment at the new casino!

Built in 1989

## Essential Information

MLS® # E4452941

Price \$289,000



Bedrooms	2
Bathrooms	1.00
Full Baths	1
Square Footage	900
Acres	0.51
Year Built	1989
Type	Rural
Sub-Type	Detached Single Family
Style	Bungalow
Status	Active

### Community Information

Address	100 254053 Twp Road 460
Area	Rural Wetaskiwin County
Subdivision	Summerhaven
City	Rural Wetaskiwin County
County	ALBERTA
Province	AB
Postal Code	T9A 1W8

### Amenities

Features	Deck, Gazebo
----------	--------------

### Interior

Heating	Forced Air-1, Natural Gas
Stories	1
Has Basement	Yes
Basement	None, No Basement

### Exterior

Exterior	Wood
Exterior Features	Flat Site, Landscaped
Construction	Wood
Foundation	Piling

### Additional Information

Date Listed	August 14th, 2025
Days on Market	7
Zoning	Zone 80

DATA IS DEEMED RELIABLE BUT IS NOT GUARANTEED ACCURATE BY THE REALTORS® ASSOCIATION OF EDMONTON. COPYRIGHT 2025 BY THE REALTORS® ASSOCIATION OF EDMONTON. ALL RIGHTS RESERVED. Trademarks are owned or controlled by the Canadian Real Estate Association (CREA) and identify real estate professionals who are members of CREA (REALTOR®, REALTORS®) and/or the quality of services they provide (MLS®, Multiple Listing Service®)

Listing information last updated on August 21st, 2025 at 4:47am MDT