

\$410,000 - 1301 Glen Haven Crescent, Rural Wetaskiwin County

MLS® #E4452968

\$410,000

1 Bedroom, 1.00 Bathroom, 351 sqft

Rural on 5.19 Acres

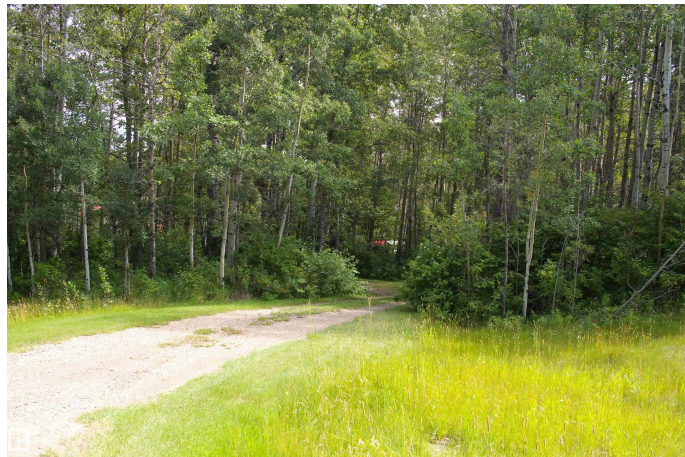
Mulhurst Bay, Rural Wetaskiwin County, AB

Beautiful, peaceful, a hidden gem just North of Mulhurst. Just over 5 acres, set up as a family compound, lovingly maintained for the last 30 years. The cottage is the main meeting point with a family-sized deck/patio featuring outdoor kitchen setup and plenty of room for everyone to eat, visit and socialize. Lots of places for trailers, campers. There's a pair of overnight cabins, for those that forgot to bring something to sleep in. Lots of storage and space to put stuff. There's a pond on the East side of the cleared property, and trails leading back into the bush in the back. Three season property, I'm not sure whether anyone would winter here, but it's delightful.

Built in 2003

Essential Information

MLS® #	E4452968
Price	\$410,000
Bedrooms	1
Bathrooms	1.00
Full Baths	1
Square Footage	351
Acres	5.19
Year Built	2003
Type	Rural



Sub-Type	Cottage
Style	Bungalow
Status	Active

Community Information

Address	1301 Glen Haven Crescent
Area	Rural Wetaskiwin County
Subdivision	Mulhurst Bay
City	Rural Wetaskiwin County
County	ALBERTA
Province	AB
Postal Code	T0C 2C0

Amenities

Features	Deck
----------	------

Interior

Heating	Space Heater, Propane
Stories	1
Has Basement	Yes
Basement	None, No Basement

Exterior

Exterior	Prefab
Exterior Features	Private Setting, Stream/Pond, Treed Lot
Construction	Prefab
Foundation	Pylon

Additional Information

Date Listed	August 13th, 2025
Days on Market	4
Zoning	Zone 95

DATA IS DEEMED RELIABLE BUT IS NOT GUARANTEED ACCURATE BY THE REALTORS® ASSOCIATION OF EDMONTON. COPYRIGHT 2025 BY THE REALTORS® ASSOCIATION OF EDMONTON. ALL RIGHTS RESERVED. Trademarks are owned or controlled by the Canadian Real Estate Association (CREA) and identify real estate professionals who are members of CREA (REALTOR®, REALTORS®) and/or the quality of services they provide (MLS®, Multiple Listing Service®)

Listing information last updated on August 17th, 2025 at 1:47pm MDT