

\$968,800 - 935 Heacock Road, Edmonton

MLS® #E4453110

\$968,800

6 Bedroom, 3.50 Bathroom, 3,098 sqft

Single Family on 0.00 Acres

Henderson Estates, Edmonton, AB

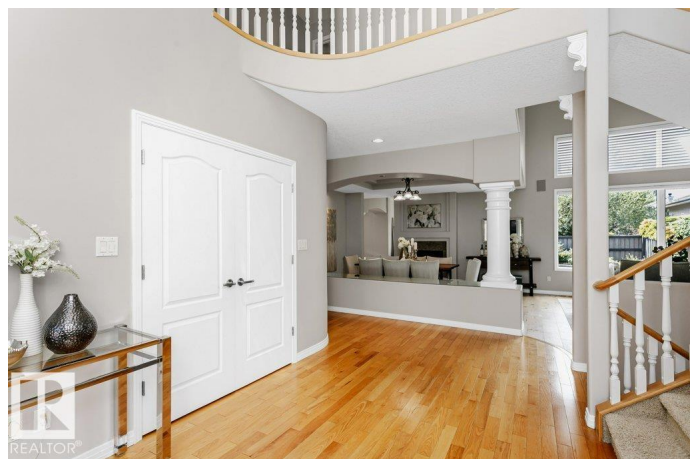
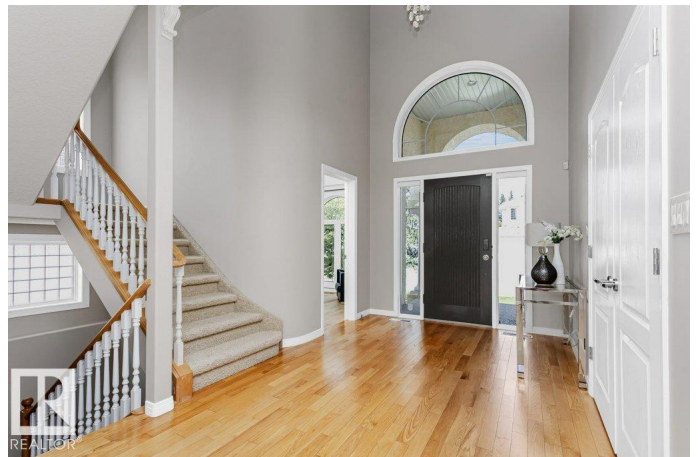
SPECTACULAR Managen custom-built home in prestigious Eagle Ridge! This STUNNING property offers 4,600+ sqft of living space, 3+3 bdrms, 3.5 baths & a heated garage on a 6,700+ sqft SW-facing lot. Architectural open floor plan perfectly blends aesthetics, comfort & functionality. Main flr features a grand foyer w/ soaring ceilings, DEN, cozy living rm w/ vaulted ceiling & formal dining. Gourmet kitchen boasts ample white cabinets, granite ctps, gas stove & center island. Relax in the serene family rm w/ 2-sided F/P overlooking backyard. Open stairwell leads upstairs to a HUGE primary suite w/ lavish 5pc ensuite & lrg W/I closet, 2nd bdrm, ENORMOUS 3rd bdrm (can be converted to TWO), & main bath. F/F basement offers a large rec rm w/ bar, 3 bdrms & full bath. Beautifully landscaped SW backyard. Steps to scenic river valley trails, Riverbend Square, rec centre, excellent schools & transit. Quick access to UofA, Henday & Whitemud. A rare find in one of Edmonton's best communities for your family to enjoy!

Built in 1998

Essential Information

MLS® # E4453110

Price \$968,800



Bedrooms	6
Bathrooms	3.50
Full Baths	3
Half Baths	1
Square Footage	3,098
Acres	0.00
Year Built	1998
Type	Single Family
Sub-Type	Detached Single Family
Style	2 Storey
Status	Active

Community Information

Address	935 Heacock Road
Area	Edmonton
Subdivision	Henderson Estates
City	Edmonton
County	ALBERTA
Province	AB
Postal Code	T6G 1N1

Amenities

Amenities	Air Conditioner, Deck, Detectors Smoke, Hot Water Natural Gas, No Smoking Home, Vaulted Ceiling, Vinyl Windows
Parking	Double Garage Attached

Interior

Interior Features	ensuite bathroom
Appliances	Air Conditioning-Central, Dishwasher-Built-In, Dryer, Garage Control, Garage Opener, Hood Fan, Refrigerator, Stove-Gas, Washer, Window Coverings
Heating	Forced Air-1, Natural Gas
Stories	3
Has Basement	Yes
Basement	Full, Finished

Exterior

Exterior	Wood, Stucco
Exterior Features	Fenced, Flat Site, Landscaped, Playground Nearby, Public

Transportation, Schools, Shopping Nearby

Roof	Cedar Shakes
Construction	Wood, Stucco
Foundation	Concrete Perimeter

School Information

Elementary	Earl Buxton School
Middle	Riverbend School
High	Lillian Osborne School

Additional Information

Date Listed	August 15th, 2025
Days on Market	1
Zoning	Zone 14

DATA IS DEEMED RELIABLE BUT IS NOT GUARANTEED ACCURATE BY THE REALTORS® ASSOCIATION OF EDMONTON. COPYRIGHT 2025 BY THE REALTORS® ASSOCIATION OF EDMONTON. ALL RIGHTS RESERVED. Trademarks are owned or controlled by the Canadian Real Estate Association (CREA) and identify real estate professionals who are members of CREA (REALTOR®, REALTORS®) and/or the quality of services they provide (MLS®, Multiple Listing Service®)

Listing information last updated on August 16th, 2025 at 1:32pm MDT