

\$199,900 - 49530 A Rr90, Rural Brazeau County

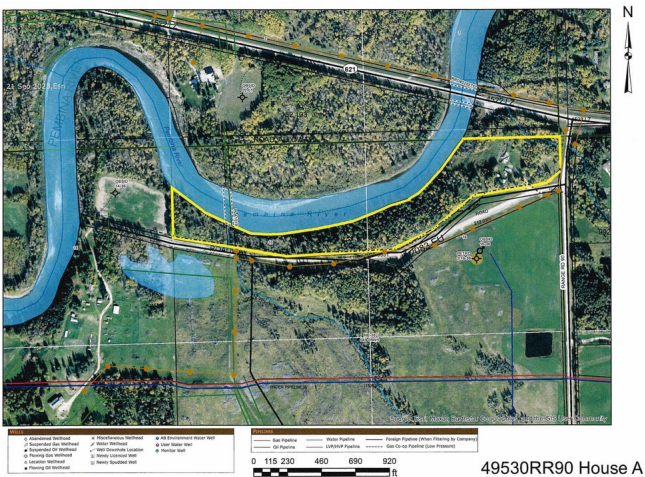
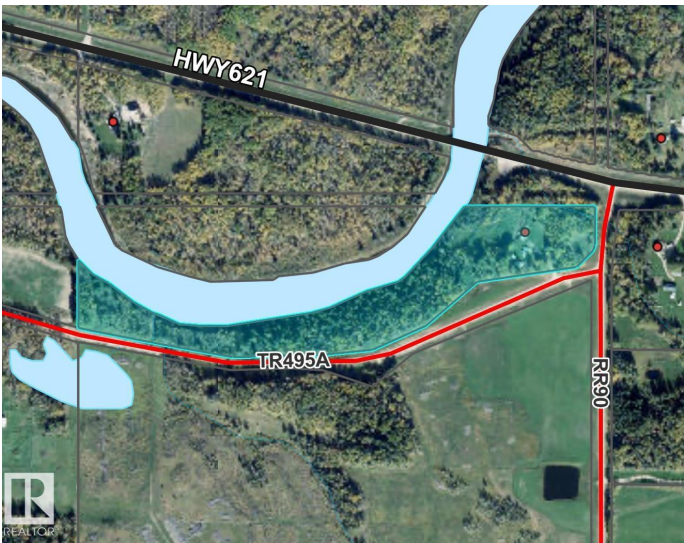
MLS® #E4453215

\$199,900

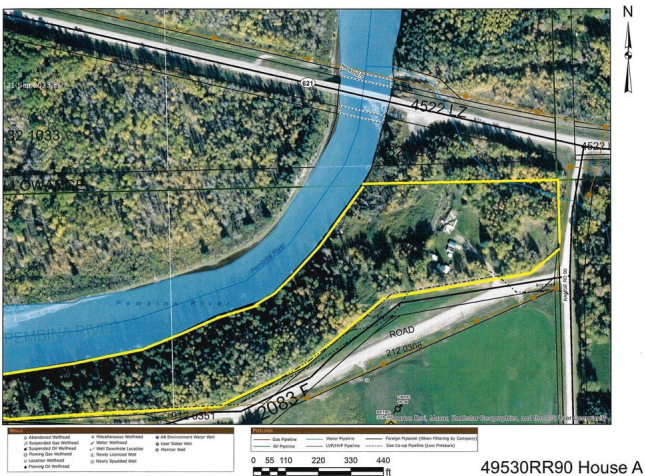
0 Bedroom, 0.00 Bathroom,
Rural on 15.26 Acres

None, Rural Brazeau County, AB

FOR SALE: 15+ ACRE RIVERFRONT RETREAT – BRAZEAU COUNTY. A Rare Opportunity to Own Your Private Piece of Paradise! Just 12 paved kilometers from Drayton Valley, this stunning 15+ acre property offers the ultimate blend of seclusion, convenience, and natural beauty. Nestled along the breathtaking Pembina River, this mostly treed haven boasts incredible views, abundant wildlife, and unbeatable privacy. Established yard site. Driveway already in place. All outbuildings stay – AS IS. Services already on the property Very close to pavement – easy access year-round Whether you're looking to create your dream property, a recreational retreat, or invest in a slice of Alberta’s natural beauty, this is a rare find. Enjoy the Pembina riverfront, explore the woods, go swimming, and wake up to the sounds of nature, all just minutes from town!



49530RR90 House A



49530RR90 House A

Essential Information

| | |
|-----------|-----------------|
| MLS® # | E4453215 |
| Price | \$199,900 |
| Bathrooms | 0.00 |
| Acres | 15.26 |
| Type | Rural |
| Sub-Type | Vacant Lot/Land |
| Status | Active |

Community Information

| | |
|-------------|----------------------|
| Address | 49530 A Rr90 |
| Area | Rural Brazeau County |
| Subdivision | None |
| City | Rural Brazeau County |
| County | ALBERTA |
| Province | AB |
| Postal Code | T0E 1Z0 |

Exterior

| | |
|-------------------|---|
| Exterior Features | Creek, Private Setting, River Valley View, River View, Treed Lot, See Remarks |
|-------------------|---|

Additional Information

| | |
|----------------|-------------------|
| Date Listed | August 15th, 2025 |
| Days on Market | 2 |
| Zoning | Zone 90 |

DATA IS DEEMED RELIABLE BUT IS NOT GUARANTEED ACCURATE BY THE REALTORS® ASSOCIATION OF EDMONTON. COPYRIGHT 2025 BY THE REALTORS® ASSOCIATION OF EDMONTON. ALL RIGHTS RESERVED.Trademarks are owned or controlled by the Canadian Real Estate Association (CREA) and identify real estate professionals who are members of CREA (REALTOR®, REALTORS®) and/or the quality of services they provide (MLS®, Multiple Listing Service®)

Listing information last updated on August 17th, 2025 at 3:47pm MDT