

\$279,999 - 197 Marlborough Place, Edmonton

MLS® #E4453429

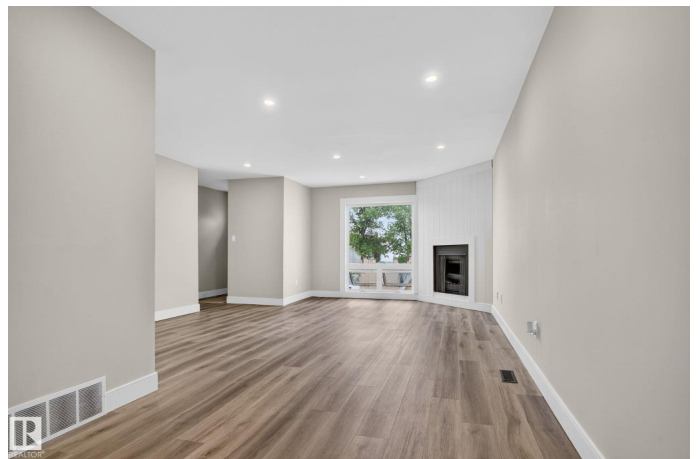
\$279,999

4 Bedroom, 2.00 Bathroom, 1,130 sqft

Condo / Townhouse on 0.00 Acres

Ormsby Place, Edmonton, AB

Welcome to this fully renovated 2 storey townhouse in the desirable West end community of Ormsby Place—UPGRADED from top to bottom! The spacious and open concept floor plan expands throughout all 1130 Sq Ft. This bright & neutral space features a spacious living room fitted w/ a shiplap backing fireplace, a separate dining area, and a modern kitchen w/ SS appliances. As you make your way upstairs, you'll discover a generously sized primary bedroom, along with two additional bedrooms, all providing ample closet space and finished with an upper exterior patio. The upper level is completed with a spa like 4pc bathroom. Downstairs, the fully finished basement expands your living space with a private bedroom, full bathroom, and an expansive recreation area designed for relaxing or entertaining. The space is completed w/ a washer & dryer. Enjoy a fully fenced front yard, an assigned parking stall, & a location that's close to shopping, schools & all amenities! All new plumbing & electrical—top to bottom reno.



Built in 1977

Essential Information

MLS® # E4453429

Price \$279,999

Bedrooms	4
Bathrooms	2.00
Full Baths	2
Square Footage	1,130
Acres	0.00
Year Built	1977
Type	Condo / Townhouse
Sub-Type	Townhouse
Style	2 Storey
Status	Active

Community Information

Address	197 Marlborough Place
Area	Edmonton
Subdivision	Ormsby Place
City	Edmonton
County	ALBERTA
Province	AB
Postal Code	T5T 1Y6

Amenities

Amenities	On Street Parking, No Smoking Home, Parking-Extra, Parking-Plug-Ins, See Remarks
Parking	Stall

Interior

Appliances	Dishwasher-Built-In, Dryer, Oven-Microwave, Refrigerator, Stove-Electric, Washer
Heating	Forced Air-1, Natural Gas
Stories	3
Has Basement	Yes
Basement	Full, Finished

Exterior

Exterior	Wood, Vinyl
Exterior Features	Fenced, Golf Nearby, Low Maintenance Landscape, Playground Nearby, Public Transportation, Schools, Shopping Nearby, See Remarks
Roof	Asphalt Shingles
Construction	Wood, Vinyl

Foundation Concrete Perimeter

School Information

Elementary Ormsby School
Middle S. Bruce Smith School
High Jasper Place School

Additional Information

Date Listed August 17th, 2025
Days on Market 1
Zoning Zone 20
Condo Fee \$327

DATA IS DEEMED RELIABLE BUT IS NOT GUARANTEED ACCURATE BY THE REALTORS® ASSOCIATION OF EDMONTON. COPYRIGHT 2025 BY THE REALTORS® ASSOCIATION OF EDMONTON. ALL RIGHTS RESERVED.Trademarks are owned or controlled by the Canadian Real Estate Association (CREA) and identify real estate professionals who are members of CREA (REALTOR®, REALTORS®) and/or the quality of services they provide (MLS®, Multiple Listing Service®)
Listing information last updated on August 18th, 2025 at 1:17am MDT