

# \$77,000 - 1806 Cove Crescent, Rural Lac Ste. Anne County

MLS® #E4453744

**\$77,000**

1 Bedroom, 0.00 Bathroom, 721 sqft

Rural on 0.14 Acres

Alberta Beach, Rural Lac Ste. Anne County, AB

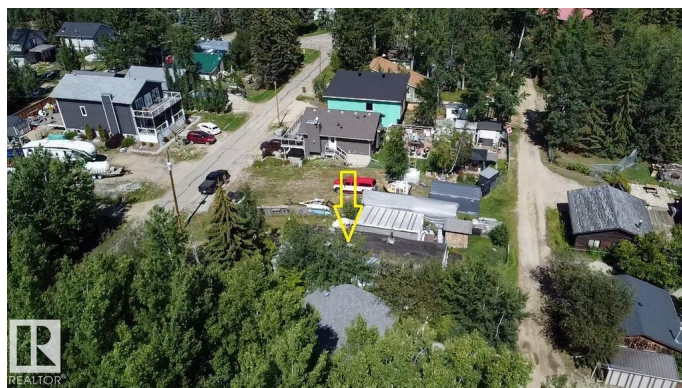
Court of King's Bench Foreclosure! Bring offers! Your chance to own a piece of land to build your dream cottage on in West Cove on Lac Ste. Anne! Just need an excavator to remove the current place and you're all set to build. Treed on one side from neighbors, a short walk/drive to the lake, on a quiet local traffic only crescent. A great spot to create an Airbnb or your perfect year round getaway a short drive from the city!

Built in 1975

## Essential Information

MLS® #	E4453744
Price	\$77,000
Bedrooms	1
Bathrooms	0.00
Square Footage	721
Acres	0.14
Year Built	1975
Type	Rural
Sub-Type	Vacant Lot/Land
Style	Bungalow
Status	Active

## Community Information



Address	1806 Cove Crescent
Area	Rural Lac Ste. Anne County
Subdivision	Alberta Beach
City	Rural Lac Ste. Anne County
County	ALBERTA
Province	AB
Postal Code	T0E 0A1

### **Amenities**

Features	Off Street Parking, See Remarks
----------	---------------------------------

### **Interior**

Heating	Forced Air-1, Natural Gas
Stories	1
Has Basement	Yes
Basement	None, No Basement

### **Exterior**

Exterior	See Remarks
Exterior Features	Boating, No Through Road, Playground Nearby, Private Setting, Rolling Land
Construction	See Remarks
Foundation	See Remarks

### **Additional Information**

Date Listed	August 18th, 2025
Days on Market	3
Zoning	Zone 71

DATA IS DEEMED RELIABLE BUT IS NOT GUARANTEED ACCURATE BY THE REALTORS® ASSOCIATION OF EDMONTON. COPYRIGHT 2025 BY THE REALTORS® ASSOCIATION OF EDMONTON. ALL RIGHTS RESERVED. Trademarks are owned or controlled by the Canadian Real Estate Association (CREA) and identify real estate professionals who are members of CREA (REALTOR®, REALTORS®) and/or the quality of services they provide (MLS®, Multiple Listing Service®)

Listing information last updated on August 20th, 2025 at 11:17pm MDT