

\$474,900 - 931 Morris Way, Leduc

MLS® #E4454335

\$474,900

3 Bedroom, 3.50 Bathroom, 1,389 sqft

Single Family on 0.00 Acres

Meadowview Park_LEDU, Leduc, AB

Step inside this show-stopping home, where luxury meets artistry at every turn. Bask in the glow of 3 fireplaces & dazzling live-edge accents—maple handrails & exquisite acacia wood doors set the tone. The beautiful kitchen boasts a 7' quartz island, apron sink with touch tap, sleek black SS appliances, & ingenious Rev-A-Shelf organizers. A convenient main floor laundry with large-capacity washer/dryer with pedestals. Unwind in the inviting bonus room, warmed by a cozy fireplace, custom built-ins, & a dramatic glass-walled stairwell. The spa-inspired ensuite dazzles with a walk-in shower, towel warmer, waterfall faucet, & chic wall sconces. Downstair, a retreat awaits- offering a wetbar with stone feature-wall & retro fridge, 3rd bedroom, a full bath with another towel warmer. Professionally landscaped yard with low-maintenance design offering a charming paved stone patio, dry creek bed, mature perennials, storage shed, and full fence. Additionally an oversized dbl detached garage that is fully finished.

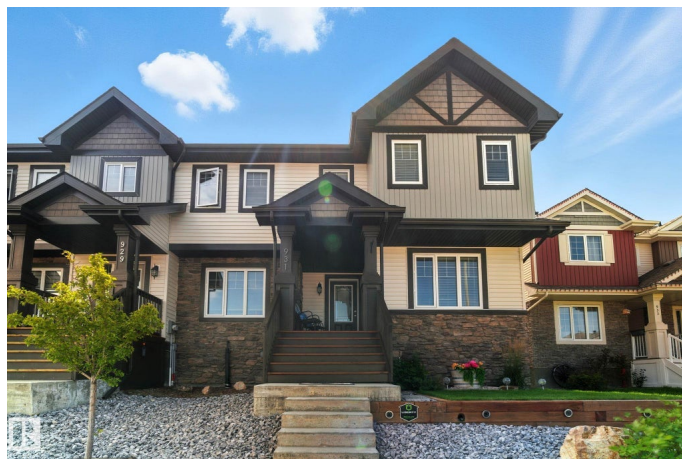
Built in 2017

Essential Information

MLS® # E4454335

Price \$474,900

Bedrooms 3



Bathrooms	3.50
Full Baths	3
Half Baths	1
Square Footage	1,389
Acres	0.00
Year Built	2017
Type	Single Family
Sub-Type	Residential Attached
Style	2 Storey
Status	Active

Community Information

Address	931 Morris Way
Area	Leduc
Subdivision	Meadowview Park_LEDU
City	Leduc
County	ALBERTA
Province	AB
Postal Code	T9E 1G1

Amenities

Amenities	Patio
Parking	Double Garage Detached, Heated

Interior

Interior Features	ensuite bathroom
Appliances	Air Conditioning-Central, Dishwasher-Built-In, Dryer, Garage Control, Garage Opener, Microwave Hood Fan, Washer, Window Coverings, Refrigerators-Two
Heating	Forced Air-1, Natural Gas
Fireplace	Yes
Fireplaces	Insert
Stories	2
Has Basement	Yes
Basement	Full, Finished

Exterior

Exterior	Wood, Vinyl
Exterior Features	Back Lane, Fenced, Landscaped, Low Maintenance Landscape,

Playground Nearby, Schools, Shopping Nearby

Roof	Asphalt Shingles
Construction	Wood, Vinyl
Foundation	Concrete Perimeter

Additional Information

Date Listed	August 21st, 2025
Days on Market	2
Zoning	Zone 81

DATA IS DEEMED RELIABLE BUT IS NOT GUARANTEED ACCURATE BY THE REALTORS® ASSOCIATION OF EDMONTON. COPYRIGHT 2025 BY THE REALTORS® ASSOCIATION OF EDMONTON. ALL RIGHTS RESERVED. Trademarks are owned or controlled by the Canadian Real Estate Association (CREA) and identify real estate professionals who are members of CREA (REALTOR®, REALTORS®) and/or the quality of services they provide (MLS®, Multiple Listing Service®)

Listing information last updated on August 23rd, 2025 at 8:17am MDT