

## \$648,800 - 13007 213 Street, Edmonton

MLS® #E4454337

**\$648,800**

3 Bedroom, 2.50 Bathroom, 2,153 sqft

Single Family on 0.00 Acres

Trumpeter Area, Edmonton, AB

Welcome to this beautifully crafted family home, ideally situated on a quiet street in the heart of Trumpeter at Big Lake. Offering nearly 2,200 sqft. of thoughtfully designed living space, this property is both functional & stylish. The main floor boasts a spacious foyer, a versatile flex room, a bright open-concept kitchen with quartz countertops & a walk-through pantry that connects to the mudroom with built-in cubbies, a generous closet, & garage access. The great room is accented by a cozy gas fireplace, while large windows fill the home with natural light. A convenient 2-piece bath completes the main level. Upstairs, you'll find 3 bedrooms, including a primary suite with a WIC & 3-pc ensuite, along with a bonus room, 4-pc bath, & laundry. The finished basement offers a spacious recreation area with potential for an additional bedroom & bathroom, plus plenty of storage. This home is close to all amenities with quick access to the Henday & Yellowhead Trail, perfect for family living & convenience.

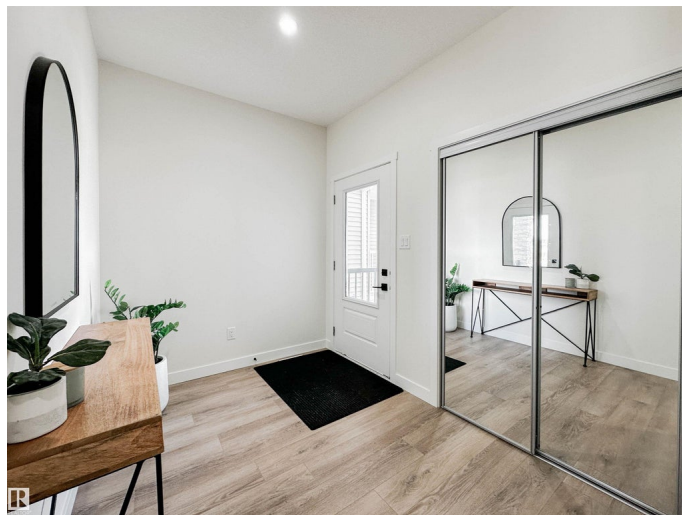
Built in 2024

### Essential Information

MLS® # E4454337

Price \$648,800

Bedrooms 3



Bathrooms	2.50
Full Baths	2
Half Baths	1
Square Footage	2,153
Acres	0.00
Year Built	2024
Type	Single Family
Sub-Type	Detached Single Family
Style	2 Storey
Status	Active

### Community Information

Address	13007 213 Street
Area	Edmonton
Subdivision	Trumpeter Area
City	Edmonton
County	ALBERTA
Province	AB
Postal Code	T5S 0T7

### Amenities

Amenities	Ceiling 9 ft., Deck, Exterior Walls- 2"x6", See Remarks
Parking Spaces	4
Parking	Double Garage Attached

### Interior

Interior Features	ensuite bathroom
Appliances	Dishwasher-Built-In, Dryer, Garage Control, Garage Opener, Hood Fan, Oven-Microwave, Refrigerator, Stove-Electric, Washer, Window Coverings
Heating	Forced Air-1, Natural Gas
Fireplace	Yes
Fireplaces	Insert
Stories	2
Has Basement	Yes
Basement	Full, Finished

### Exterior

Exterior	Wood, Stone, Vinyl
----------	--------------------

Exterior Features	Landscaped, Playground Nearby, Schools, Shopping Nearby, See Remarks
Roof	Asphalt Shingles
Construction	Wood, Stone, Vinyl
Foundation	Concrete Perimeter

**Additional Information**

Date Listed	August 22nd, 2025
Days on Market	1
Zoning	Zone 59

DATA IS DEEMED RELIABLE BUT IS NOT GUARANTEED ACCURATE BY THE REALTORS® ASSOCIATION OF EDMONTON. COPYRIGHT 2025 BY THE REALTORS® ASSOCIATION OF EDMONTON. ALL RIGHTS RESERVED.Trademarks are owned or controlled by the Canadian Real Estate Association (CREA) and identify real estate professionals who are members of CREA (REALTOR®, REALTORS®) and/or the quality of services they provide (MLS®, Multiple Listing Service®)

Listing information last updated on August 23rd, 2025 at 8:47am MDT