

## \$463,900 - 6 Summerton Landing, Sherwood Park

MLS® #E4454354

**\$463,900**

4 Bedroom, 3.50 Bathroom, 1,391 sqft

Single Family on 0.00 Acres

Summerwood, Sherwood Park, AB

WELCOME HOME to this FULLY FINISHED 1391 sq ft 2-storey located in the beautiful family-friendly community of Summerwood. Upon entering the home you will be greeted with the main floor living room with bright bay windows and a cozy gas fireplace. The kitchen and dining area set-up is perfect for all your dinner parties with the adjacent living room, or take your guests outside in the summer months to enjoy the spacious patio and backyard. Upstairs you will find a spacious primary bedroom with walk-in closet and 4-piece ensuite. Two additional bedrooms and another 4-piece bathroom complete the upper level. Downstairs you will find the perfect guest area or teenage retreat with a separate living room, additional bedroom and another 4-piece bathroom. Double detached garage complete with exterior attic access for all your storage needs. This is the ideal location, close to walking/bike trails and steps away from a community garden and fabulous spray park! \*Some photos have been virtually staged\*

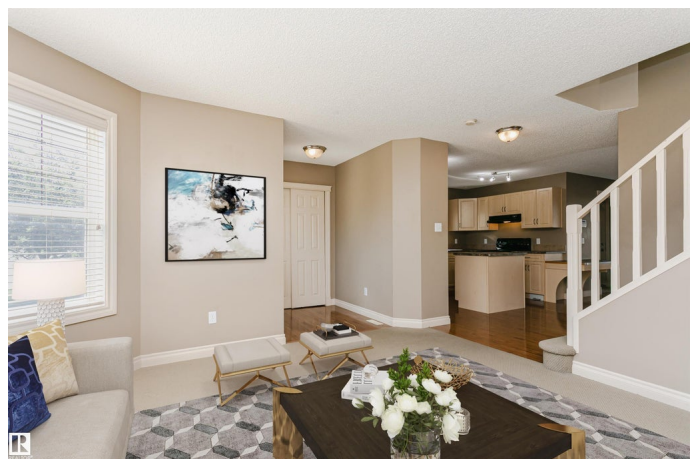
Built in 2004

### Essential Information

MLS® # E4454354

Price \$463,900

Bedrooms 4



Bathrooms	3.50
Full Baths	3
Half Baths	1
Square Footage	1,391
Acres	0.00
Year Built	2004
Type	Single Family
Sub-Type	Detached Single Family
Style	2 Storey
Status	Active

### Community Information

Address	6 Summerton Landing
Area	Sherwood Park
Subdivision	Summerwood
City	Sherwood Park
County	ALBERTA
Province	AB
Postal Code	T8H 2P4

### Amenities

Amenities	Exterior Walls- 2"x6"
Parking	Double Garage Detached

### Interior

Interior Features	ensuite bathroom
Appliances	Dishwasher-Built-In, Dryer, Garage Opener, Hood Fan, Refrigerator, Stove-Electric, Vacuum System Attachments, Vacuum Systems, Washer
Heating	Forced Air-1, Natural Gas
Fireplace	Yes
Fireplaces	Mantel, Tile Surround
Stories	3
Has Basement	Yes
Basement	Full, Finished

### Exterior

Exterior	Wood, Vinyl
Exterior Features	Back Lane, Flat Site, Golf Nearby, Low Maintenance Landscape, Playground Nearby, Public Transportation, Shopping Nearby

Roof	Asphalt Shingles
Construction	Wood, Vinyl
Foundation	Concrete Perimeter

**School Information**

Elementary	Davidson Creek
Middle	Lakeland Ridge
High	Archbishop Jordan

**Additional Information**

Date Listed	August 22nd, 2025
Days on Market	1
Zoning	Zone 25

DATA IS DEEMED RELIABLE BUT IS NOT GUARANTEED ACCURATE BY THE REALTORS® ASSOCIATION OF EDMONTON. COPYRIGHT 2025 BY THE REALTORS® ASSOCIATION OF EDMONTON. ALL RIGHTS RESERVED.Trademarks are owned or controlled by the Canadian Real Estate Association (CREA) and identify real estate professionals who are members of CREA (REALTOR®, REALTORS®) and/or the quality of services they provide (MLS®, Multiple Listing Service®)

Listing information last updated on August 23rd, 2025 at 5:02am MDT