

\$499,980 - 15128 88a Street, Edmonton

MLS® #E4454673

\$499,980

4 Bedroom, 3.00 Bathroom, 1,260 sqft

Single Family on 0.00 Acres

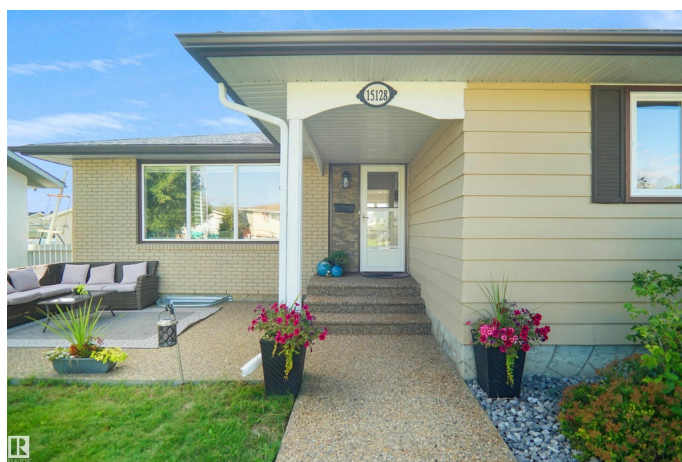
Evansdale, Edmonton, AB

Welcome to this spacious 1260 + sq ft bungalow located in the desirable community of Evansdale! This well-maintained home offers a total of 4 bedrooms, 3 full bathrooms, and is perfect for growing families or investors. The main floor features a bright and open living room, large kitchen with ample cabinet space, 3 generous bedrooms, and 2 bathrooms including a primary ensuite. The fully finished basement includes a second kitchen, massive living room, additional bedroom, full bathroom, and separate entrance – ideal for extended family or potential mother in law suite. Enjoy the large backyard with room to relax or entertain, plus plenty of parking. Close to schools, parks, shopping, and transit. A great opportunity in a quiet, family-friendly neighborhood!

Built in 1972

Essential Information

| | |
|----------------|-----------|
| MLS® # | E4454673 |
| Price | \$499,980 |
| Bedrooms | 4 |
| Bathrooms | 3.00 |
| Full Baths | 3 |
| Square Footage | 1,260 |
| Acres | 0.00 |
| Year Built | 1972 |



| | |
|----------|------------------------|
| Type | Single Family |
| Sub-Type | Detached Single Family |
| Style | Bungalow |
| Status | Active |

Community Information

| | |
|-------------|------------------|
| Address | 15128 88a Street |
| Area | Edmonton |
| Subdivision | Evansdale |
| City | Edmonton |
| County | ALBERTA |
| Province | AB |
| Postal Code | T5E 5T7 |

Amenities

| | |
|----------------|------------------------|
| Amenities | See Remarks |
| Parking Spaces | 4 |
| Parking | Double Garage Detached |

Interior

| | |
|-------------------|---|
| Interior Features | ensuite bathroom |
| Appliances | Dishwasher-Built-In, Dryer, Washer, Window Coverings, Refrigerators-Two, Stoves-Two |
| Heating | Forced Air-1, Natural Gas |
| Stories | 2 |
| Has Basement | Yes |
| Basement | Full, Finished |

Exterior

| | |
|-------------------|--|
| Exterior | Wood, Metal, Stucco |
| Exterior Features | Fenced, Landscaped, Park/Reserve, Playground Nearby, Public Transportation, Schools, Shopping Nearby |
| Roof | Asphalt Shingles |
| Construction | Wood, Metal, Stucco |
| Foundation | Concrete Perimeter |

Additional Information

| | |
|----------------|-------------------|
| Date Listed | August 25th, 2025 |
| Days on Market | 1 |

Zoning

Zone 02

DATA IS DEEMED RELIABLE BUT IS NOT GUARANTEED ACCURATE BY THE REALTORS® ASSOCIATION OF EDMONTON. COPYRIGHT 2025 BY THE REALTORS® ASSOCIATION OF EDMONTON. ALL RIGHTS RESERVED. Trademarks are owned or controlled by the Canadian Real Estate Association (CREA) and identify real estate professionals who are members of CREA (REALTOR®, REALTORS®) and/or the quality of services they provide (MLS®, Multiple Listing Service®)

Listing information last updated on August 26th, 2025 at 11:48am MDT