

\$89,900 - Twp881 (spirit River), Rural Saddle Hills County

MLS® #E4455302

\$89,900

0 Bedroom, 0.00 Bathroom,
Rural on 10.01 Acres

None, Rural Saddle Hills County, AB

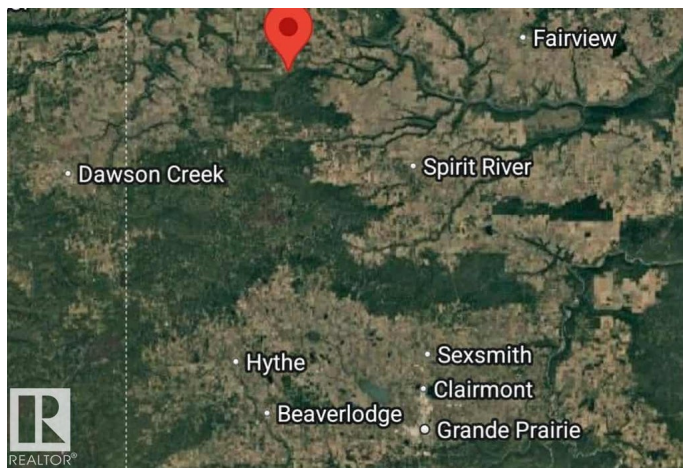
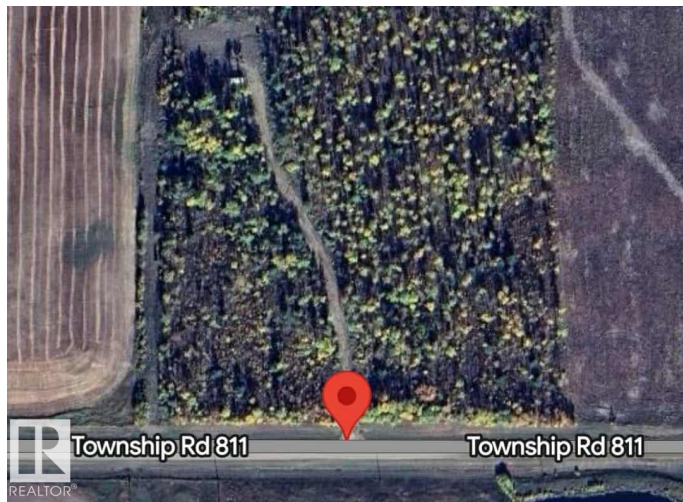
SPIRIT RIVER - 10 ACRES, PRIVATELY TREED! Private driveway in, open yard site has a cistern in the ground for water, and treed in for privacy, as the photos show. 53 minutes to Spirit River. Take the private driveway through the trees to the yard site, where there is plenty of room for your RV's to enjoy for now, and room to build a home or cabin in the future! Tons of space to make trails throughout the acreage for recreation. This whole area offers a lot for recreation, like hunting and fishing, with a provincial park and lake nearby. Such a beautiful part of Alberta!

Essential Information

MLS® #	E4455302
Price	\$89,900
Bathrooms	0.00
Acres	10.01
Type	Rural
Sub-Type	Vacant Lot/Land
Status	Active

Community Information

Address	Twp881 (spirit River)
Area	Rural Saddle Hills County
Subdivision	None



City	Rural Saddle Hills County
County	ALBERTA
Province	AB
Postal Code	T0H 3G0

Exterior

Exterior Features Private Setting, Recreation Use, Schools, Treed Lot, See Remarks

Additional Information

Date Listed	August 29th, 2025
Days on Market	2
Zoning	Zone 60

DATA IS DEEMED RELIABLE BUT IS NOT GUARANTEED ACCURATE BY THE REALTORS® ASSOCIATION OF EDMONTON. COPYRIGHT 2025 BY THE REALTORS® ASSOCIATION OF EDMONTON. ALL RIGHTS RESERVED. Trademarks are owned or controlled by the Canadian Real Estate Association (CREA) and identify real estate professionals who are members of CREA (REALTOR®, REALTORS®) and/or the quality of services they provide (MLS®, Multiple Listing Service®)

Listing information last updated on August 31st, 2025 at 6:17am MDT