

Courtesy Of David G Parker Of Northfield Commercial

\$1,330,000 - 16940 111 Avenue, Edmonton

MLS® #E4455665

\$1,330,000

0 Bedroom, 0.00 Bathroom,

Retail on 0.00 Acres

West Sheffield Industrial, Edmonton, AB

Own prime retail in West Edmonton! High Exposure! Retail Frontage onto 170 Street! End Cap! Total of 3 Retail Units - 1 contiguous space. Multiple entrances. High Ceiling. Approval for rear overhead door. 3,423 sq ft. For Ssale - Options also available for lease. Built 1997.Units 16,17,18

Built in 1997

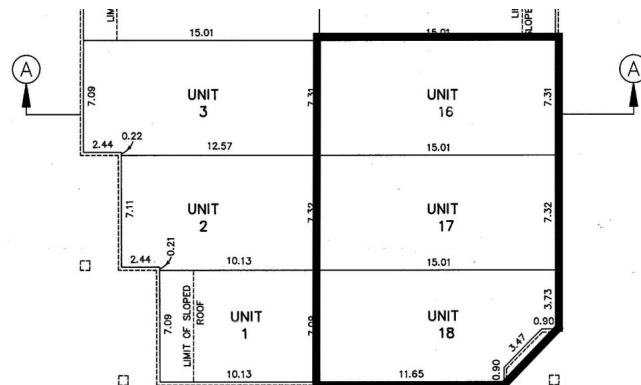
Essential Information

| | |
|------------|-------------|
| MLS® # | E4455665 |
| Price | \$1,330,000 |
| Bathrooms | 0.00 |
| Acres | 0.00 |
| Year Built | 1997 |
| Type | Retail |
| Status | Active |

Community Information

| | |
|-------------|---------------------------|
| Address | 16940 111 Avenue |
| Area | Edmonton |
| Subdivision | West Sheffield Industrial |
| City | Edmonton |
| County | ALBERTA |
| Province | AB |
| Postal Code | T5X 2P1 |

Exterior



| | |
|--------------|--------------------------|
| Exterior | Brick, Wood Frame, Mixed |
| Construction | Brick, Wood Frame, Mixed |

Additional Information

| | |
|----------------|---------------------|
| Date Listed | September 2nd, 2025 |
| Days on Market | 1 |
| Zoning | Zone 40 |

DATA IS DEEMED RELIABLE BUT IS NOT GUARANTEED ACCURATE BY THE REALTORS® ASSOCIATION OF EDMONTON. COPYRIGHT 2025 BY THE REALTORS® ASSOCIATION OF EDMONTON. ALL RIGHTS RESERVED.Trademarks are owned or controlled by the Canadian Real Estate Association (CREA) and identify real estate professionals who are members of CREA (REALTOR®, REALTORS®) and/or the quality of services they provide (MLS®, Multiple Listing Service®)

Listing information last updated on September 3rd, 2025 at 6:47am MDT