

\$0 - 16735 71 Street, Edmonton

MLS® #E4455784

\$0

0 Bedroom, 0.00 Bathroom,
Retail on 0.00 Acres

Schonsee, Edmonton, AB

Positioned in one of the city's most rapidly growing neighborhoods, Schonsee Landing offers a unique opportunity for forward-thinking businesses to establish themselves in a high-visibility, high-traffic location. Strategically located near major thoroughfares including 167 Avenue and 71 Street, this development ensures exceptional accessibility for both local residents and commuters. Schonsee Landing is designed to support a dynamic mix of commercial tenants, with ideal spaces for: • Restaurants & Cafés • Health & Wellness Services • Boutique & Specialty Retail • Professional Offices etc.



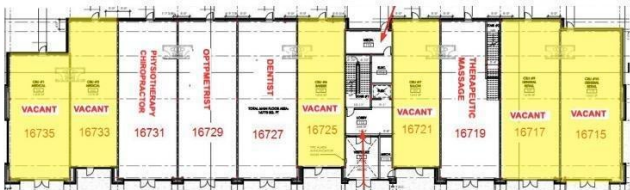
Built in 2025

Essential Information

| | |
|------------|----------|
| MLS® # | E4455784 |
| Bathrooms | 0.00 |
| Acres | 0.00 |
| Year Built | 2025 |
| Type | Retail |
| Status | Active |

Community Information

| | |
|-------------|-----------------|
| Address | 16735 71 Street |
| Area | Edmonton |
| Subdivision | Schonsee |



| | |
|-------------|----------|
| City | Edmonton |
| County | ALBERTA |
| Province | AB |
| Postal Code | T5Z 1Z8 |

Exterior

| | |
|--------------|-------------|
| Exterior | Steel Frame |
| Construction | Steel Frame |

Additional Information

| | |
|----------------|---------------------|
| Date Listed | September 2nd, 2025 |
| Days on Market | 3 |
| Zoning | Zone 28 |

DATA IS DEEMED RELIABLE BUT IS NOT GUARANTEED ACCURATE BY THE REALTORS® ASSOCIATION OF EDMONTON. COPYRIGHT 2025 BY THE REALTORS® ASSOCIATION OF EDMONTON. ALL RIGHTS RESERVED. Trademarks are owned or controlled by the Canadian Real Estate Association (CREA) and identify real estate professionals who are members of CREA (REALTOR®, REALTORS®) and/or the quality of services they provide (MLS®, Multiple Listing Service®)

Listing information last updated on September 5th, 2025 at 12:17pm MDT