

\$249,900 - 291 Hwy 13, Rural Wetaskiwin County

MLS® #E4456044

\$249,900

3 Bedroom, 1.00 Bathroom, 1,115 sqft

Rural on 0.47 Acres

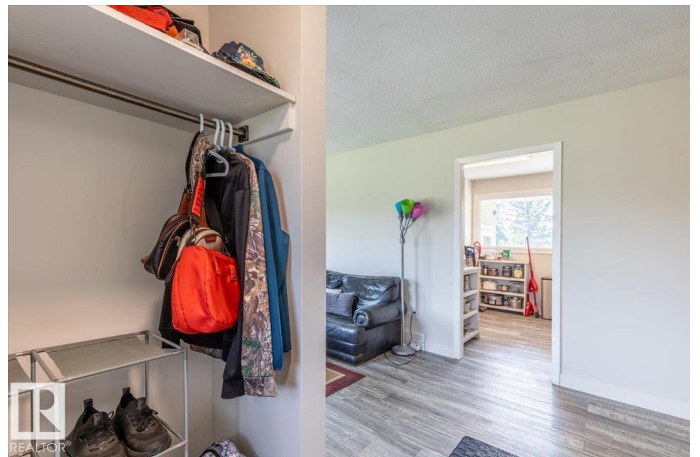
None, Rural Wetaskiwin County, AB

Just under half an acre, this property offers plenty of space with a fully fenced backyard. The 3-bedroom home features new flooring, fresh paint, and newer windows throughout, creating a bright and welcoming feel. Practical updates include upgraded electrical, a new hot water tank, and a new pressure tank, giving peace of mind for years to come. The unfinished basement provides excellent potential to customize to your needs—whether extra living space, storage, or a recreation area. Located within walking distance to schools, this home blends convenience with a large lot and modern improvements, making it a great choice for families or those seeking room to grow.

Built in 1964

Essential Information

MLS® #	E4456044
Price	\$249,900
Bedrooms	3
Bathrooms	1.00
Full Baths	1
Square Footage	1,115
Acres	0.47
Year Built	1964
Type	Rural



Sub-Type	Detached Single Family
Style	Bungalow
Status	Active

Community Information

Address	291 Hwy 13
Area	Rural Wetaskiwin County
Subdivision	None
City	Rural Wetaskiwin County
County	ALBERTA
Province	AB
Postal Code	T0C 1H0

Amenities

Features	Off Street Parking, Detectors Smoke, Fire Pit, R.V. Storage, Storage-In-Suite, Vinyl Windows
----------	--

Interior

Heating	Forced Air-1, Natural Gas
Stories	1
Has Basement	Yes
Basement	Full, Unfinished

Exterior

Exterior	Wood
Exterior Features	Fenced, Fruit Trees/Shrubs, Golf Nearby, Landscaped, Playground Nearby, Private Setting, Schools, Shopping Nearby
Construction	Wood
Foundation	Concrete Perimeter

Additional Information

Date Listed	September 4th, 2025
Days on Market	11
Zoning	Zone 90

DATA IS DEEMED RELIABLE BUT IS NOT GUARANTEED ACCURATE BY THE REALTORS® ASSOCIATION OF EDMONTON. COPYRIGHT 2025 BY THE REALTORS® ASSOCIATION OF EDMONTON. ALL RIGHTS RESERVED. Trademarks are owned or controlled by the Canadian Real Estate Association (CREA) and identify real estate professionals who are members of CREA (REALTOR®, REALTORS®) and/or the quality of services they provide (MLS®, Multiple Listing Service®)

Listing information last updated on September 15th, 2025 at 12:17am MDT