

\$229,000 - Twp Rd 572a Hwy 33, Rural Lac Ste. Anne County

MLS® #E4456560

\$229,000

0 Bedroom, 0.00 Bathroom,
Rural on 66.47 Acres

Rich Valley, Rural Lac Ste. Anne County, AB

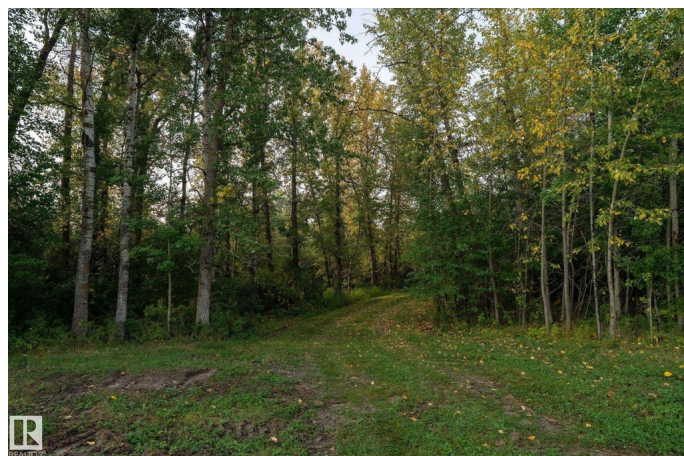
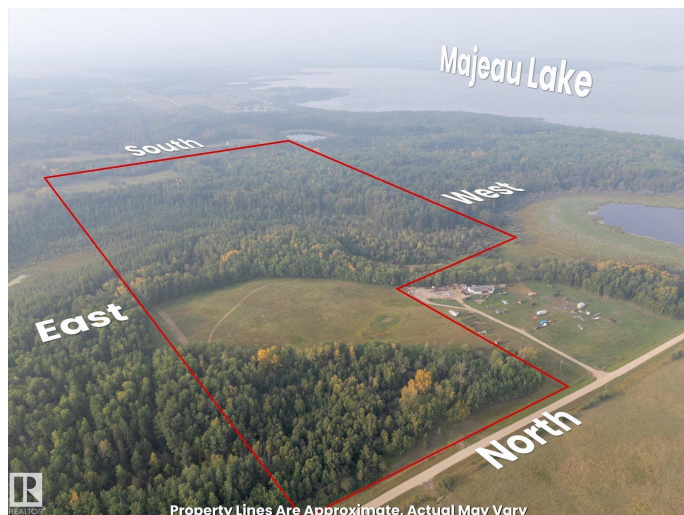
Looking for space, trails, trees, or maybe some hunting? This 66-acre property north of Rich Valley may be the perfect spot. Just 1 km west off Hwy 33, youâ€™ll find a mix of cleared land and mature trees with access to the Majeau Lake watershedâ€”ideal for recreation, trails, or building your private retreat. The property offers privacy at the back while remaining conveniently located: only 45 minutes from Spruce Grove, 15 minutes from Barrhead, and 5 minutes to Lac La Nonne. Easy access with pavement right to the area and just 1 km of gravel road. A rare opportunity to own your own slice of paradise close to town but surrounded by nature.

Essential Information

MLS® #	E4456560
Price	\$229,000
Bathrooms	0.00
Acres	66.47
Type	Rural
Sub-Type	Vacant Lot/Land
Status	Active

Community Information

Address Twp Rd 572a Hwy 33



Area	Rural Lac Ste. Anne County
Subdivision	Rich Valley
City	Rural Lac Ste. Anne County
County	ALBERTA
Province	AB
Postal Code	T0A 1N6

Exterior

Exterior Features Private Setting, Rolling Land, Treed Lot, See Remarks

Additional Information

Date Listed	September 4th, 2025
Days on Market	10
Zoning	Zone 70

DATA IS DEEMED RELIABLE BUT IS NOT GUARANTEED ACCURATE BY THE REALTORS® ASSOCIATION OF EDMONTON. COPYRIGHT 2025 BY THE REALTORS® ASSOCIATION OF EDMONTON. ALL RIGHTS RESERVED. Trademarks are owned or controlled by the Canadian Real Estate Association (CREA) and identify real estate professionals who are members of CREA (REALTOR®, REALTORS®) and/or the quality of services they provide (MLS®, Multiple Listing Service®)

Listing information last updated on September 14th, 2025 at 9:02am MDT